

Evaluation of a NIR camera for monitoring yield and nitrogen effect in sugarcane

Evaluación de una cámara NIR para el monitoreo de productividad y efecto del nitrógeno en caña de azúcar

César Edwin García¹, David Montero¹, and Héctor Alberto Chica¹

ABSTRACT

The main objective of the research carried out in the sugar productive sector in Colombia is to improve crop productivity of sugarcane. The rise of RPAS, together with the use of multispectral cameras, which allows for high spatial resolution images and spectral information outside the visible spectrum, has generated an alternative nondestructive technological approach to monitoring crop sugarcane that must be evaluated and adapted to the specific conditions of Colombia's sugar productive sector. In this context, this paper assesses the potential of a modified camera (NIR) to discriminate three varieties of sugarcane, as well as three doses of fertilization and estimating the sugarcane yield at an early stage, for the three varieties through multiple vegetation indices. In this study, no significant differences were found by vegetation index between fertilization doses, and only significant differences between varieties were found when the fertilization was normal or high. Likewise, multiple regressions between scores derived from vegetation indices after applying PCA and productivity produced determinations of up to 56%.

Key words: nitrogen, yield, near infrared, precision agriculture, vegetation index, RPAS.

RESUMEN

El principal objetivo de las investigaciones llevadas a cabo en el sector azucarero de Colombia es el de mejorar la productividad del cultivo de la caña de azúcar. El auge de los RPAS y el uso de cámaras multiespectrales ha generado un enfoque tecnológico alternativo para monitorear los cultivos de caña de azúcar de manera no destructiva ya que se pueden obtener imágenes de alta resolución espacial e información espectral fuera del espectro visible. Esta tecnología debe ser evaluada y adaptada a las condiciones específicas del sector azucarero del país. En este contexto, el presente artículo presenta los resultados del potencial de una cámara modificada (NIR) para discriminar tres variedades de caña de azúcar, así como tres dosis de fertilización y estimar tempranamente la productividad de tres variedades de caña de azúcar por medio de múltiples índices de vegetación. En este estudio no se encontraron diferencias significativas por índices de vegetación entre dosis de fertilización y sólo se encontraron diferencias significativas entre variedades cuando la dosis de fertilización fue normal o alta. Adicionalmente, por cada variedad evaluada, se hizo un análisis de componentes principales entre los índices de vegetación (existió una alta correlación entre los índices), y con los cinco primeros componentes se hizo una regresión múltiple para modelar las toneladas de caña por hectárea obteniéndose determinaciones de hasta el 56%.

Palabras clave: nitrógeno, productividad, infrarrojo cercano, agricultura de precisión, índice de vegetación, RPAS.

Introduction

Monitoring sugarcane using orbital remote sensors has been the subject of research around the world. This technique has allowed the measurement of the reflected and absorbed radiation of the vegetation, obtaining different results that have been used for different purposes in agriculture such as discrimination between crops, discrimination based on variety, assessment of water stress, estimating yield, among others (Fernandes *et al.*, 2011; Aguiar *et al.*, 2011; Vieira *et al.*, 2012; Govender *et al.*, 2007).

The sensors used for spectral and spatial information may be on board satellites or airborne vehicles and their use will depend on the scale of work or detail expected in the products used to monitor the crop (Schmidt *et al.*, 2000); Satellite images have been used on several occasions for studies at a regional level (Mulianga *et al.*, 2013), but in the case of high level detail scales monitoring, the use of Unmanned Aerial Vehicles (UAVs) or Remotely Piloted Aircraft Systems (RPAS) is becoming a great tool for this task. This recent interest in using unmanned aerial vehicles in the study of agricultural crops is largely due to the great

Received for publication: 02 November, 2016. Accepted for publication: 15 March, 2017.

Doi: 10.15446/agron.colomb.v35n1.60852

¹ Centro de Investigación de la Caña de Azúcar de Colombia (Sugarcane Research Center of Colombia), Cali (Colombia). cegarcia@cenicana.org



Agronomía Colombiana 35(1), 82-91, 2017

benefits gained by their implementation: low prices and easy logistics compared to satellite products, high spatial and temporal resolution and the possibility of spectral information in different regions of the electromagnetic spectrum that allow the calculation of various vegetation indices, making them a great tool for monitoring and follow-up in different cultures (Lelong *et al.*, 2008).

Multiple vegetation indices derived from visible and infrared spectrum of conventional, multispectral and hyperspectral sensors have been created in order to make assessments on different agronomic crops from these data, including determining the chlorophyll content (Hatfield *et al.*, 2008), leaf area index (LAI) (Hunt *et al.*, 2013) or nitrogen concentration (Miphokasap *et al.*, 2012; Blackmer *et al.*, 1996; Feng *et al.*, 2008; Abdel-Rahman *et al.*, 2010). Many others are equally used for nitrogen treatment discrimination (Foster *et al.*, 2012) or varietal discrimination (Johnson *et al.*, 2008; Galvao *et al.*, 2005). More recently, the potential uses of these indices on crop yield from satellite sensors have been evaluated (Morel *et al.*, 2014), as well as time series of other variables such as Fraction of Absorbed Photosynthetically Active radiation (fPAR) (Duveiller *et al.*, 2013). Early estimates have been made using high-resolution airborne sensors of crop yield from vegetation indices (Berger *et al.*, 2013) and even indices obtained with the use of ground sensors (Lofton *et al.*, 2012).

In Colombia, the monitoring of sugarcane cultivation is conducted by the Sugarcane Research Center of Colombia (Cenicaña), using satellite images, especially from MODIS-Terra sensor, Landsat TM and ETM+ images and data reflectance obtained by field spectroradiometry (Murillo and Carbonell, 2012). However, Colombia, being geographically located within the intertropical front, is subject to permanent cloud coverage, which has been a limiting factor for timely and regular acquisition of satellite images of high spatial optical resolution.

The use of UAVs or RPAS with multispectral cameras can be a solution to the difficulties encountered in relation to the high percentage of clouds that appears in the satellite images since the flying height of the RPAS allows imaging without cloud interference. Moreover, having the ability to increase the frequency of shots and produce highly detailed images, thus allowing for a full monitoring of the crop and achieving effective control to improve productivity, which can be affected by various factors that vary both spatially and temporally (Gopala Pillai and Tian, 1999).

The aim of this study was to evaluate the ability of a multispectral camera to generate vegetation indices and using

them to estimate crop yield, between varieties discrimination and between nitrogen levels effect discrimination.

Materials and methods

Study area

The study was conducted by Cenicaña in the experimental lot three of the International Center for Tropical Agriculture (CIAT), located in the municipality of Palmira, Valle del Cauca, Colombia (Fig. 1A). The geographical coordinates of the study area are 3°29'43.62" N and 76°21'49.51" W. The experimental lot houses two experiments in which different sugarcane varieties with different nitrogen doses (Fig. 1C) are evaluated.

The average temperature of the area is 23.2°C, with an average radiation of 430 cal cm⁻² d⁻¹, an annual rainfall of 886 mm, a soil rich in organic matter, a clay content in a range between 35 and 60% and according to agroecological zoning (Carbonell *et al.*, 2011) the experiment is located in a Typic Hapluster soil, fine textural family and with a low humidity level (0-200 mm yr⁻¹).

RPAS and sensor

A multirotor vehicle manufactured by the Advector Company was used. It is a quadcopter type Araknos V2 model. An Agricultural Digital Camera (ADC lite), manufactured by Tetracam Inc. was used for capturing images. The ADC lite is a small 6.55×4.92 mm camera with a weight of 200 g; it generates a record of the position of each of the captured images and has a unique 3.2 megapixel sensor operating in the NIR bands from 520 nm to 920 nm, simulating TM2, TM3 and TM4 bands of Landsat Thematic Mapper sensor (TM) (Tetracam, 2015). The sensor of this camera uses a blocking filter in the blue region of the spectrum and uses the sensitivity curve of the blue filter to measure the response of the NIR, while green and red filters measure the corresponding response to each of parts of the spectrum. However, sensitivity curves of green and red have a high peak in the NIR perception, similar to the curve of sensitivity of the blue, perturbing a pure measurement of these regions of the spectrum (Tetracam, 2015).

The flight took place on May 9, 2014, between 11:00 AM and 1:00 PM, looking to have the most photosynthetically active radiation (PAR). At the time of the capturing of the images, the crop was 8.5 months old.

Experimental design

The study was carried out on a two factor experimental design: three varieties of sugarcane in three doses of nitrogen. The levels of each factor are shown in table 1.

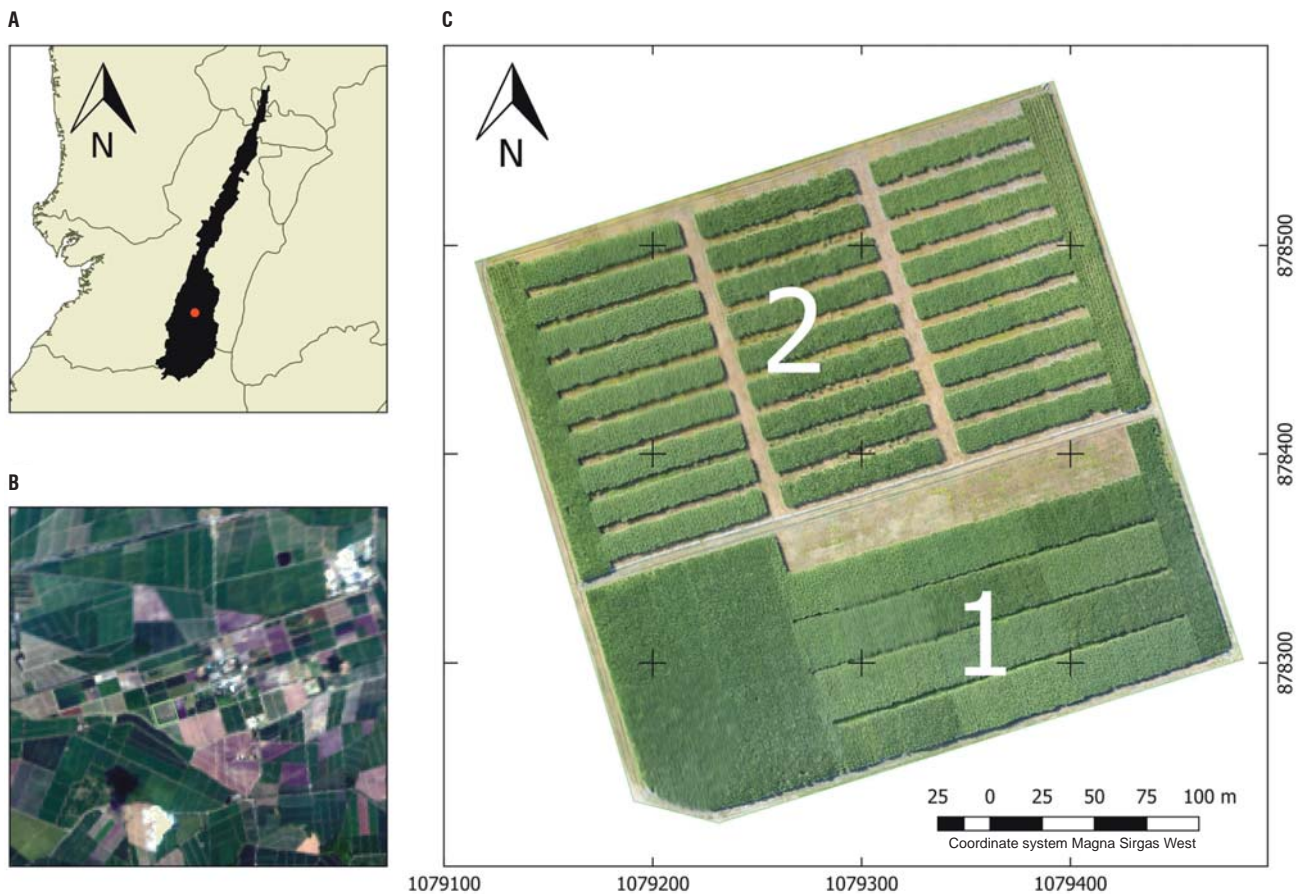


FIGURE 1. Geographic location of the study area. A. Location of the sugar industry in southwestern Colombia; B. location of the experimental lot at CIAT. C. Experimental lot divided in the two experiments assessed in the study.

TABLE 1. Experimental design factors.

Varieties	Doses (Urea)
CC 01-1940	Null (0 kg ha ⁻¹)
CC 85-92	Normal (200 kg ha ⁻¹)
CC 93-4418	High (400 kg ha ⁻¹)

Selected varieties were the ones recommended by Cenicaña Variety Program due to their increase in planted area at a commercial level and their differences in architecture and color, which will permit to assess changes in vegetation and biomass index values.

The appropriate N doses were established based on the spatial distribution of organic matter using SEF (Fertilization Expert System) developed by Cenicaña. A total of 36 field plots divided into nine treatments constructed from the combination of varieties and nitrogen doses were tested in one experiment (Tab. 2). The size of each plot corresponds to 12 furrows with dimensions of 1.65×20 m. In experiment two, only 200 kg ha⁻¹ doses were applied,

among the same three varieties of sugar cane for a total of 108 plots.

TABLE 2. Treatments in experiment 1.

Variety	Doses (kg ha ⁻¹ of Urea)	Treatment
CC 01-1940	0	1
CC 85-92	0	2
CC 93-4418	0	3
CC 01-1940	200	4
CC 85-92	200	5
CC 93-4418	200	6
CC 01-1940	400	7
CC 85-92	400	8
CC 93-4418	400	9

Both experiments were harvested between 7 and 8 September, 2014. The productivity of the experiments was measured using a cane loader where the weight and the GPS position were registered, the yield was expressed in tons of cane per hectare (t ha⁻¹) for each plot of the two experiments.

Image processing

The images obtained by the ADC lite were stored in 8-bit RAW format, obtaining an image per band and converted into TIFF format using PixelWrench2 software, which came with the camera. Later, with the images, an orthorectified mosaic of the study area was generated, following the methodology proposed by García *et al.* (2014), using the X, Y and Z of the metadata of each of the acquired images.

Once the images were processed, different vegetation indices were evaluated based on the available bands of the ADC Lite camera (Tab. 3).

TABLE 3. Indices of vegetation assessed, where N corresponds to the digital levels to near-infrared, G to green digital levels and R to digital levels of red.

Index	Formula	
Chlorophyll index - Green	$CIG = \frac{N}{G} - 1$	(1)
Chlorophyll vegetation index	$CVI = \frac{N \cdot R}{G^2}$	(2)
Green normalized difference vegetation Index	$GNDVI = \frac{N - G}{N + G}$	(3)
Modified soil adjusted vegetation index	$MSAVI = 0.5(2N + 1 - \sqrt{(2N + 1)^2 - 8(N - R)})$	(4)
Second modified triangular vegetation index	$MTVI 2 = \frac{1.5(2.5(N - G) - 2.5(R - G))}{\sqrt{(2N + 1)^2 - 6N - 5\sqrt{R} - 0.5}}$	(5)
Normalized difference vegetation index	$NDVI = \frac{N - R}{N + R}$	(6)
Normalized green red difference index	$NGRDI = \frac{G - R}{G + R}$	(7)
Optimized soil adjusted vegetation index	$OSAVI = \frac{1.16(N - R)}{(N + R + 0.16)}$	(8)
Ratio vegetation index	$RVI = \frac{N}{R}$	(9)
Soil adjusted vegetation index	$SAVI = \frac{1.5(N - R)}{(N + R + 0.5)}$	(10)
Triangular vegetation index	$TVI = 0.5(120(N - G) - 200(R - G))$	(11)

These vegetation indices respond to different factors, from the impact on quality of vegetation to structural factors such as leaves, stems and orientation. In the case of the quality of vegetation, it absorbs some of the incoming energy to perform its various internal processes, presenting a high absorption in the visible spectrum, highlighting the absorption peaks in the blue and the red, while scattering large amounts of energy in the NIR, generating a high reflectance, which is diminished when the vegetation has some type of complication or is reaching senescence (Ponzoni *et al.*, 2012).

To obtain the value of the indices evaluated for each of the plots were created Regions of Interest (ROI) in each of them, taking care to avoid areas that could alter the values obtained (shadows and regions with overturned sugarcane were excluded of the ROI), and extracted the average value of all pixels contained in the respective ROI for each plot.

The vegetation indices calculated were evaluated according to their behavior in relation to the fertilization dose in experiment one, testing its statistical differences by such doses, varieties and their interaction through ANOVA analysis and Bonferroni groups, allowing the comparison of the average of the analyzed factors, after having been subject to ANOVA analysis. Because of the disturbance mentioned earlier in the filters of green and red in the ADC lite camera, the significance level was set at $\alpha=0.1$ in order to avoid “false negatives” and losing the potential that can reach the assessed camera with the above mentioned limitations.

Similarly, indices were related by linear regression against productivity per plot, using data from experiments one and two (36 and 108 plots respectively) evaluating their relationship per set of varieties and for each variety individually and determining the best productivity prediction model.

Results

Agronomic treatment outcomes

The experiment showed a high productivity measured in tons of sugar cane per hectare ($t ha^{-1}$) based on the industry average at the time of its harvest ($121.4 t ha^{-1}$). The CC 01-1940 variety with a dose of $400 kg ha^{-1}$ of urea (treatment 7), was the one with the highest productivity reaching $250 t ha^{-1}$. On average, CC 01-1940 variety, regardless of the dose, presented the highest tonnage with a productivity of $239 t ha^{-1}$, followed by varieties CC 93-4418 with a productivity of $225 t ha^{-1}$ and CC 85-92, with a productivity of $199 t ha^{-1}$ respectively. However, comparing the tonnages between varieties, no significant differences were found due to the interactions between variety and nitrogen doses.

Analyzing the tonnage per dose of nitrogen regardless of the variety, the dose of $400 kg ha^{-1}$ was the one with the highest yield with $229 t ha^{-1}$, followed by the dose of $200 kg ha^{-1}$ with $223 t ha^{-1}$; the dose of $0 kg ha^{-1}$ was the lowest, with a productivity of $211 t ha^{-1}$. The statistical differences were found between the highest dose ($400 kg ha^{-1}$) and the lowest dose ($0 kg ha^{-1}$).

In the results of tonnage by fertilization dose, analyzed by variety, significant differences were found between the 0

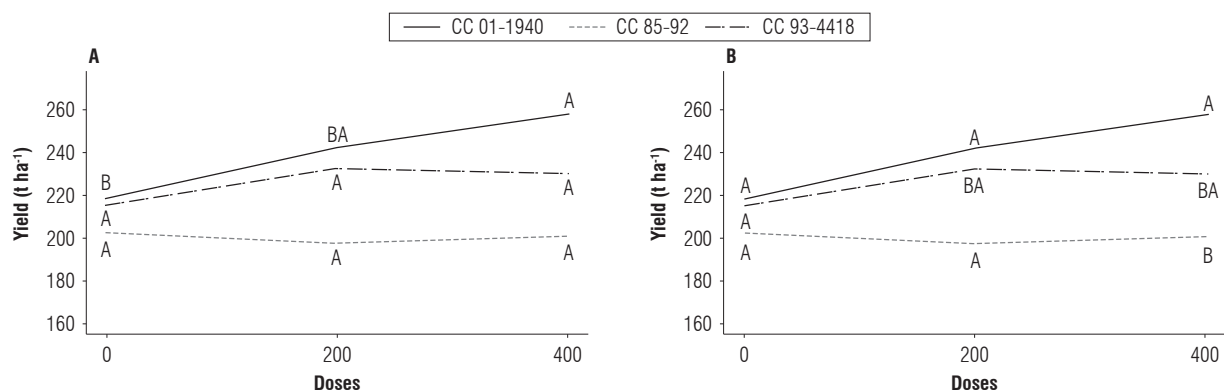


FIGURE 2. A. Differences in productivity between doses for each variety (the letters corresponding to the groups should be read horizontally for each variety) and B. Differences in productivity between varieties per dose (the letters corresponding to the groups should be read vertically for each dose).

kg ha⁻¹ and the 400 kg ha⁻¹ doses in the CC 01-1940 variety; for other treatments, including CC 93-4418 and CC 85-92 varieties, no significant differences between the doses were found (Fig. 2A).

The yield results for varieties analyzed by dose showed that in the 0 kg ha⁻¹ dose there were no significant differences between any of the three varieties, but in doses of 200 kg ha⁻¹ and 400 kg ha⁻¹, significant differences between CC 85-92 and CC 01-1940 varieties were found (Fig. 2B).

Separability by indices of fertilization and varieties

Analyses of variance were performed to determine the possible statistical differences of the average of the established indices between different fertilization doses, as well as the varieties and their interaction. Table 4 is presented in *P-values*, obtained from the analyses of variance performed for each index, for the Variety and Dose factors and the interaction between Variety and Doses. There was no experimental evidence that would confirm the existence of significant differences between nitrogen doses and their interaction with the varieties, however, there were two indices, CIG and GNDVI, where it was possible to detect statistical differences between varieties, with a 10% significance.

The values of each of the indices of experiment one were averaged for variety and in turn by fertilization dose, obtaining a similar trend in most of the indices, for which the highest value of each index corresponds to a fertilization dose of 200 kg ha⁻¹ in CC 01-1940 (treatment 4) (Fig. 3), except for the CVI and TVI indices, the first one showing a reverse behavior (Fig. 3C) and the second one obtaining the highest value on a dose of 0 kg ha⁻¹ in CC 93-4418 variety (Fig. 3L); while lower index values correspond to the CC

TABLE 4. P-value by index for variety, dose factors and the variety-dose interaction, a result of ANOVA variance analysis for both experiments.

Index	Variety	Doses	Variety:doses
CIG	0.0725*	0.7489	0.5134
CVI	0.3995	0.9360	0.5617
GNDVI	0.0660*	0.7239	0.5256
MSAVI	0.2383	0.8718	0.5131
MTVI2	0.2355	0.8693	0.5183
NDVI	0.2438	0.8881	0.5399
NGRDI	0.3341	0.9343	0.5585
OSAVI	0.2526	0.8893	0.5211
RVI	0.5750	0.8002	0.6481
SAVI	0.2530	0.8905	0.5288
TVI	0.3029	0.7770	0.6217

*Significant differences with a $\alpha=0.1$

85-92 variety on the three fertilization doses (treatments 2, 5 and 8).

Bonferroni test was used at 10% (which keeps the experimental error rate with I and II errors at appropriate levels) to analyze the statistical differences of indices between fertilization dose pairs, varieties pairs (Fig. 3) and between varieties pairs for each fertilization dose (Fig. 4). In figure 3 it can be seen that no index manages to separate between fertilization doses, by variety; whereas in figure 4 it can be seen that two of the evaluated indices, CIG and GNDVI (Fig. 4B and 4D), were able to achieve the difference of CC 01-1940 and CC 93-4418 varieties from CC 85-92 variety, only when these three varieties were fertilized with normal and high doses (200 and 400 kg ha⁻¹).

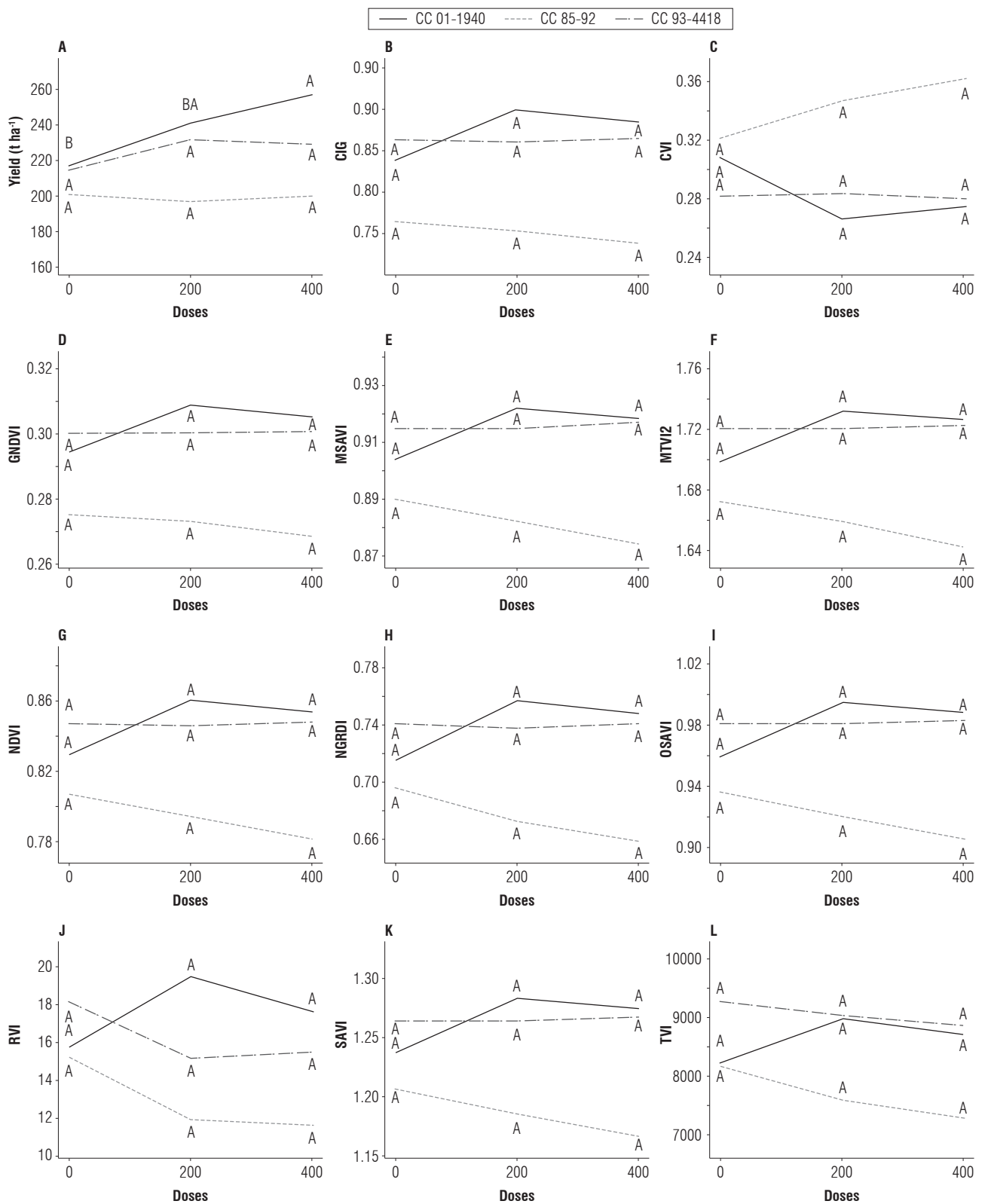


FIGURE 3. Bonferroni grouping of productivity and vegetation indices between doses for each variety (figures should be read horizontally for each of the varieties).

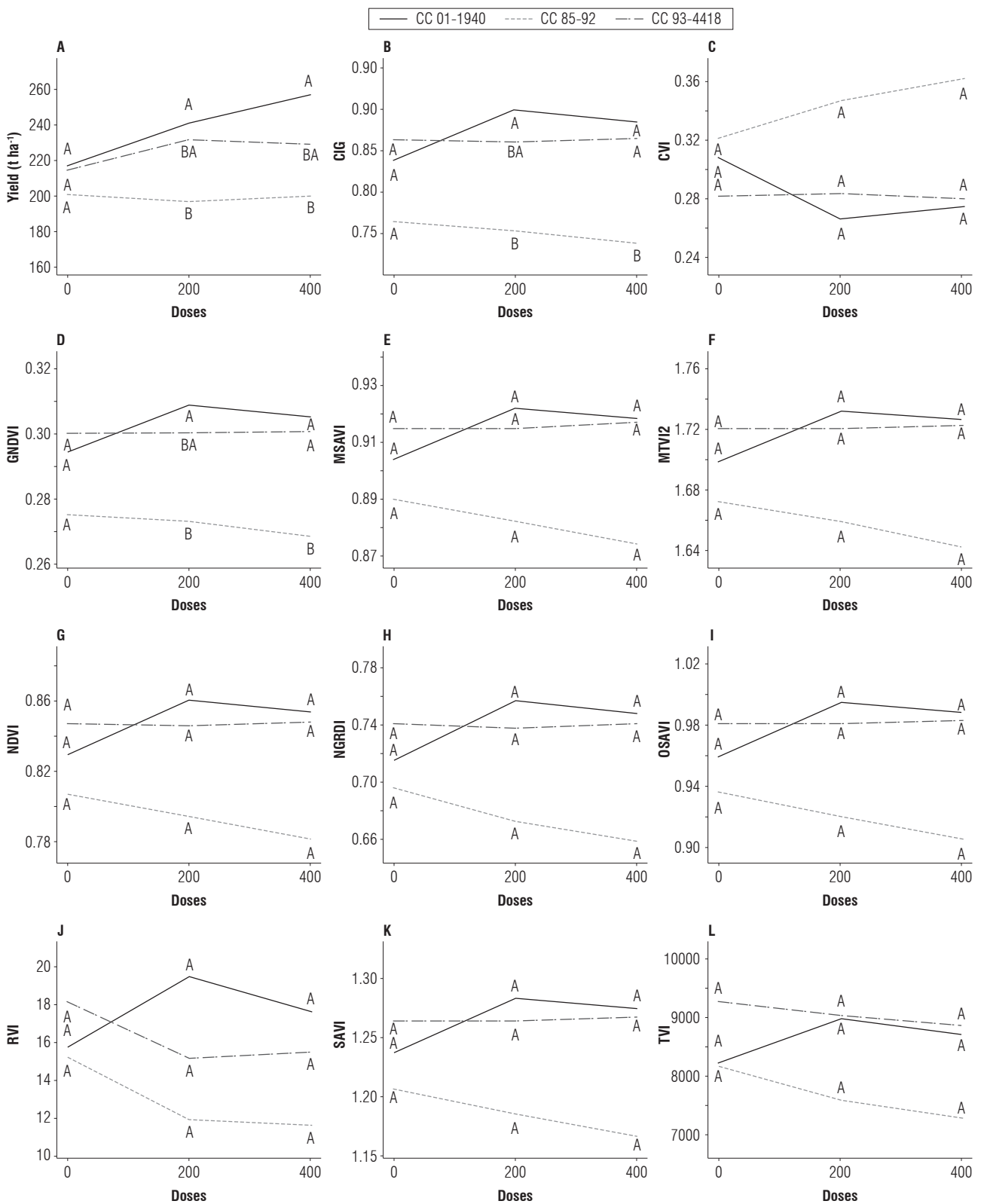


FIGURE 4. Bonferroni grouping of productivity and vegetation indices between varieties per dose (figures should be read vertically for each dose).

Relationship between vegetation indices and productivity

Structure of correlation between vegetation indices

For each variety, a factor analysis was conducted, using the main components as extraction method, to find correlations between the eleven indices measured in the study. Although the nature of the relationship between indices should not be affected by the variety, it was made for each one to numerically compare that the pattern did not change.

In all cases (varieties), 100% of the variability structure of the vegetation indices was achieved with five factors, and 98% with the first two. Furthermore, significant correlations between components and indices were found in the first two factors, as described in table 5.

TABLE 5. Correlations between each index and the first two factors extracted by main components.

Index	CC 01-1940		CC 85-92		CC 93-4418	
	Factor 1	Factor 2	Factor 1	Factor 2	Factor 1	Factor 2
CIG	0.986	-0.115	0.984	-0.133	0.982	-0.118
CVI	-0.998	0.001	-0.996	-0.037	-0.996	-0.006
GNDVI	0.986	-0.130	0.983	-0.138	0.980	-0.142
MSAVI	0.994	-0.067	0.997	-0.036	0.993	-0.098
MTVI2	0.994	-0.074	0.996	-0.048	0.992	-0.105
NDVI	0.996	-0.065	0.999	-0.028	0.996	-0.078
NGRDI	0.999	-0.031	0.999	0.002	0.998	-0.022
OSAVI	0.997	-0.062	0.999	-0.030	0.996	-0.078
RVI	0.939	0.108	0.938	0.115	0.914	0.243
SAVI	0.997	-0.058	0.999	-0.024	0.996	-0.076
TVI	0.664	0.745	0.300	0.952	0.750	0.643

From table 5 it is concluded that except the TVI (which is related to factor 2), all indices are strongly correlated because the lowest relationship between them and factor one is 0.93. The CVI index has an inverse relationship with the others.

Relationship between vegetation indices and productivity

As a result of the high correlation between indices, and to be able to model their relationship to productivity without multicollinearity problems, it was decided to set a multiple linear regression between productivity and the scores of the top five factors of factor analysis (the first five reach a 100% explained variability) for each variety. Table 6 shows that in the varieties CC 85-92 and CC 93-4418 it is possible to explain the variation in productivity in at least 48% and 56% respectively. Also, the average estimation error of the model is 23.6 t ha⁻¹ and 29.5 t ha⁻¹. In variety CC 01-1940 the

adjustment range was 20% with an estimation error of 28.4 t ha⁻¹. Table 7 shows the estimates of the model parameters for each variety.

TABLE 6. Multiple regression statistics by variety.

Variety	Anova P-value	Standard error (t)	Adjusted R ²
CC 01-1940	0.0129	28.4	20%
CC 85-92	<.0001	23.6	48%
CC 93-4418	<.0001	29.5	56%

TABLE 7. Parameter estimates with their p-values for each variety.

Parameter	CC 01-1940		CC 85-92		CC 93-4418	
	Estimate	P-value	Estimate	P-value	Estimate	P-value
Intercept	229.108	<.0001	174.324	<.0001	174.324	<.0001
Factor 1	11.809	0.007	21.342	<.0001	21.342	<.0001
Factor 2	9.853	0.022	4.330	0.215	4.330	0.215
Factor 3	0.428	0.918	-7.421	0.037	-7.421	0.037
Factor 4	5.275	0.209	-0.602	0.862	-0.602	0.862
Factor 5	4.454	0.288	7.278	0.041	7.278	0.041

Discussion

For most indices in experiment one, the highest value obtained is the response to a fertilization dose of 200 kg ha⁻¹ on the CC 01-1940 variety, while the lower value obtained is the response of a fertilization dose of 400 kg ha⁻¹ on the CC 85-92 variety; however, no index found significant differences between fertilization doses or Variety-Dose interaction.

According to Foster *et al.* (2012), the indices that are sensitive to the content of chlorophyll in the plant, such as those working in regions of green, red and red edge; take advantage of the reflectance ratios in these areas to achieve nitrogen treatment discriminations. The indices evaluated in this study did not discriminate between fertilization doses. This is explained either by low spectral quality relative to the assessed camera or by the amount of organic matter present in the experiment (3.03%), which allows the release of nitrogen and other nutrients in the soil, yielding a more constant availability of nutrients for the three varieties present.

As for varietal discrimination in experiment one, just the CIG and GNDVI indices found significant differences in the dose of 400 kg ha⁻¹ between CC 85-92 variety, which has the lowest index values, and the varieties CC 01-1940 and CC 93-4418, which have the highest index values, and no significant difference between the latter. Similarly,

significant differences were found in the dose of 200 kg ha⁻¹ between varieties CC 85-92 and CC 01-1940 while CC 93-4418 variety could not be separated from the first two. This differentiation is due in part to the canopy architecture of the plant in each of the varieties, getting a much higher spectral response in varieties with curved blades (e.g., CC 01-1940) than in varieties with erect leaves (e.g., CC 85-92), as the penetration of sunlight, and hence the reflectance, are different for each variety (Galvao *et al.*, 2005; Victoria *et al.*, 2013); however, another part of this differentiation is due to the LAI and the amount of biomass produced by each variety, eventually affecting the productivity of each of the varieties (Berger *et al.*, 2013). In contrast to the number of indices found with the ability to perform a statistical difference between varieties (two indices), Hoyos-Villegas and Fritschi (2013), using a camera ADC lite, found significant differences between two varieties of soybean by nine vegetation indices out of 15 indices evaluated with a significance level of 95%.

Conclusions

Only vegetation indices CIG and GNDVI show a significant difference between CC 85-92 variety and varieties CC 01-1940 and CC 93-4418 in doses of 400 kg ha⁻¹ and significant differences between the CC 85-92 and CC 01-1940 varieties in doses of 200 kg ha⁻¹. The CC 85-92 variety is the one that shows the lower value of vegetation index in the majority of evaluated cases, thus allowing for varietal discrimination in two of the evaluated indices. This behavior is associated with the plant structure and a low productivity compared to the productivity of the CC 01-1940 variety.

The evaluated indices showed no significant differences between the fertilization doses applied in the nine treatments of the experiment, demonstrating that its answer on the evaluated indices is very similar and it will depend both on the variety and its architecture.

The relationship between productivity and indices was modeled using a multiple linear regression and the scores obtained after an analysis of principal components (similar to a PLS regression, but made step by step) having found, for varieties CC 93-4418 and CC 85-92, determinations of 48 and 56% respectively. The percentage of variability in productivity for CC 01-1940 variety was 20%.

Although productivity depends on many factors, it was possible to approximate the explanation of its variability with the group of evaluated indices, separated in principal components, to avoid multicollinearity. The percentage of

explanation found and the standard errors were acceptable and showed that the indices became one more input to predict productivity.

The ADC Lite camera proved to be effective in discriminating CC 85-92 variety against varieties CC 01-1940 and CC 93-4418 in doses of 400 kg ha⁻¹, and CC 85-92 variety against CC 01-1940 variety in doses of 200 kg ha⁻¹, however, it does not produce positive results in the discrimination of fertilization doses.

Acknowledgments

The authors wish to thank the Colombian sugar productive sector contributions to the research being conducted in Cenicaña, as well as the company Advector for the flights and the taking of the pictures with the ADC lite camera.

Literature cited

- Abdel-Rahman, E. M., F. B. Ahmed, and M. van den Berg. 2010. Estimation of sugarcane leaf nitrogen concentration using in situ spectroscopy. *Int. J. Appl. Earth Obs. Geoinf.* 12S, S52-S57. Doi: 10.1016/j.jag.2009.11.003
- Aguiar, D.A., B.F. Theodor Rudorff, W.F. Silva, M. Adami, and M. Pupin Mello. 2011. Remote sensing images in support of environmental protocol: Monitoring the sugarcane harvest in Sao Paulo State, Brazil. *Remote Sens.* 3, 2682-2703. Doi: 10.3390/rs3122682
- Berger, A.G., D. Gaso, V.S. Ciganda, and A. Otero. 2013. Evaluation of the temporal dynamics of spectral indices and their relationship with biophysical variables on wheat for the purpose of yield estimation. 0039-0043. In: *Anais XVI Simpósio Brasileiro de Sensoriamento Remoto (SBSR)*. Foz do Iguaçu, Brazil.
- Blackmer, T.M., J.S. Schepers, G.E. Varvel, and G. Meyer. 1996. Analysis of aerial photography for nitrogen stress within corn fields. *Agron. J.* 88, 729-733. Doi: 10.2134/agronj1996.00021962008800050008x
- Carbonell, J.A., R. Quintero, J. S. Torres, C.A. Osorio, C.H. Isaacs, and J.I. Victoria. 2011. Zonificación agroecológica para el cultivo de la caña de azúcar en el valle del río Cauca (cuarta aproximación). Principios metodológicos y aplicaciones. Servicio de Cooperación Técnica y Transferencia de Tecnología, Cenicaña. Cali, Colombia.
- Duveiller, G., R. López-Lozano, and B. Baruth. 2013. Enhanced processing of 1-km spatial resolution Fapar time series for sugarcane yield forecasting and monitoring. *Remote Sens.* 5, 1091-1116. Doi: 10.3390/rs5031091
- Feng, W., X. Yao, Y. Zhu, Y.C. Tian, and W.X. Cao. 2008. Monitoring leaf nitrogen status with hyperspectral reflectance in wheat. *Eur. J. Agron.* 28, 394-404. Doi: 10.1016/j.eja.2007.11.005
- Fernandes, J.L., J. Vieira, and R.A. Camargo. 2011. Sugarcane yield estimates using time series analysis of spot vegetation images. *Sci. Agric.* 68(2), 139-146. Doi: 10.1590/S0103-90162011000200002

- Foster, A.J., V. Gopal Kakani, J. Ge, and J. Mosali. 2012. Discrimination of switchgrass cultivars and nitrogen treatments using pigment profiles and hyperspectral leaf reflectance data. *Remote Sens.* 4, 2576-2594. Doi: 10.3390/rs4092576
- Galvao, L.S., A.R. Formaggio, and D.A. Tisot. 2005. Discrimination of sugarcane varieties in Southeastern Brazil with EO-1 Hyperion data. *Remote Sens. Environ.* 94, 523-534. Doi: 10.1016/j.rse.2004.11.012
- García, C.E., F.A. Herrera, and E. Erazo. 2014. Metodología básica para la generación de índices de vegetación mediante imágenes multiespectrales aerotransportadas aplicada en cultivos de caña de azúcar. In: *Memorias XVI Simposio Internacional SELPER 2014. Sociedad Latinoamericana en Percepción Remota y Sistemas de Información Espacial.* Medellín, Colombia.
- Gopala Pillai, S. and L. Tian. 1999. In-field variability detection and spatial yield modeling for corn using digital aerial imaging. *Trans. ASAE* 42(6), 1911-1920. Doi: 10.13031/2013.13356
- Govender, M., K. Chetty, and H. Bulcock. 2007. A review of hyperspectral remote sensing and its application in vegetation and water resource studies. *Water SA* 33(2), 145-152. Doi: 10.4314/wsa.v33i2.49049
- Hatfield, J.L., A.A. Gitelson, J.S. Schepers, and C.L. Walthall. 2008. Application of spectral remote sensing for agronomic decisions. *Agron. J.* 100, S-117 - S-131. Doi: 10.2134/agronj2006.0370c
- Hoyos-Villegas, V. and F.B. Fritschi. 2013. Relationships among vegetation indices derived from aerial photographs and soybean growth and yield. *Crop Sci.* 53, 2631-2642. Doi: 10.2135/cropsci2013.02.0126
- Hunt, E.R. Jr., P.C. Doraiswamy, J.E. McMurtrey, C.S.T. Daughtry, E.M. Perry, and B. Akhmedov. 2013. A visible band index for remote sensing leaf chlorophyll content at the canopy scale. *Int. J. Appl. Earth Obs. Geoinf.* 21, 103-112. Doi: 10.1016/j.jag.2012.07.020
- Johnson, R.M., R.P. Viator, J.C. Veremis, E.P.Jr. Richard, and P.V. Zimba. 2008. Discrimination of sugarcane varieties with pigment profiles and high resolution, hyperspectral leaf reflectance data. *J. Am. Soc. Sugar Cane Technol.* 28, 63-75.
- Lelong, C.C.D., P. Burger, G. Jubelin, B. Roux, S. Labbé, and F. Baret. 2008. Assessment of unmanned aerial vehicles imagery for quantitative monitoring of wheat crop in small plots. *Sensors* 8(5), 3557-3585. Doi: 10.3390/s8053557
- Lofton, J., B.S. Tubana, Y. Kanke, J. Teboh, H. Viator, and M. Dalen. 2012. Estimating sugarcane yield potential using an in-season determination of normalized difference vegetative index. *Sensors* 12, 7529-7547. Doi: 10.3390/s120607529
- Morel, J., P. Todoroff, A. Bégué, A. Bury, J.F. Martiné, and M. Petit. 2014. Toward a satellite-based system of sugarcane yield estimation and forecasting in smallholder farming conditions: A case study on Reunion Island. *Remote Sens.* 6, 6620-6635. Doi: 10.3390/rs6076620
- Mulianga, B., A. Bégué, M. Simoes, and P. Todoroff. 2013. Forecasting regional sugarcane yield based on time integral and spatial aggregation of MODIS NDVI. *Remote Sens.* 5, 2184-2199. Doi: 10.3390/rs5052184
- Murillo, P.J. and J.A. Carbonell. 2012. Principios y aplicaciones de la percepción remota en el cultivo de la caña de azúcar en Colombia. *Servicio de Cooperación Técnica y Transferencia de Tecnología, Cenicaña.* Cali, Colombia.
- Ponzoni, F.J., Y.E. Shimabukuro, and T.M. Kuplich. 2012. *Sensoriamento remoto da vegetação.* 2nd ed. Oficina de Textos, São Paulo, Brazil.
- Schmidt, E.J., G. Narciso, P. Frost, and C. Gers. 2000. Application of remote sensing technology in the sugar industry review of recent research findings. *Proc. S. Afr. Sug. Technol. Ass.* 74, 192-200.
- Tetracam. 2015. ADC Lite. Tetracam's lightweight ADC ideal for unmanned aircraft. In: *Tetracam better science through advanced imaging*, http://www.tetracam.com/Products-ADC_Lite.htm; consulted: May 2016.
- Victoria, J.I., C.A. Viveros, F.A. Salazar, J.C. Ángel, A.E. Bustillo, U. Castro, J. López, and C.A. Moreno. 2013. *Catálogo de variedades de caña de azúcar.* 3rd ed. Servicio de Cooperación Técnica y Transferencia de Tecnología, Cenicaña. Cali, Colombia.
- Vieira, M.A., A.R. Formaggio, C.D. Rennó, C. Atzberger, D.A. Aguiar, and M.P. Mello. 2012. Object based image analysis and data mining applied to a remotely sensed Landsat time-series to map sugarcane over large areas. *Remote Sens. Environ.* 123, 553-562. Doi: 10.1016/j.rse.2012.04.011