



OLD TAHOE AND TAHOE CONGESTION CONTROL ALGORITHMS FOR TCP

SABBAR INSAIF JASIM

Lecturer in Al-Dour Institute, Salah-Adden, Dour.

sabbarjan@yahoo.com

Received on 18 January 2017 Accepted on 8 April 2018 Published on 14 May 2018

DOI: 10.30772/qjes.v11i1.522

Abstract : One of the imperative elements of TCP is the congestion control of the system which happen when numerous info streams touch base at a router whose yield limit is not as much as the whole of the data sources. This paper introduced how Old Tahoe (Congestion Avoidance) could and Tahoe (Fast Retransmit) affect the congestion control. The system was simulated using Network Simulation Program (NetSim) to study the performance of system in terms of delay and utilization for Old Tahoe (Congestion Avoidance) and Tahoe when the congestion occurred and when there is no congestion and no error and the results showed that fast retransmit was better utilization and low delay than congestion avoidance.

KEYWORDS: "transmission control protocol", "protocol data unit", "user datagram protocol", "customer-provided equipment", "ACK"

الخلاصة

هو التحكم في الزخم المروري للمعلومات في الشبكة او ما يسمى TCP ان احدى الوظائف المهمة للبروتوكول التحكم بالارسال الازدحام الذي يحدث عندما يصل العديد من معلومات إلى جهاز التوجيه (الراوتر) الذي تكون سعة خرجه أقل من مجموع مدخلاته. هذا البحث يقدم عمليا كيف يمكن لتقنية تاهو القديم (الذي هو خليط من البدء البطيء وتجنب الازدحام)، وتقنية تاهو (لدراسة NetSim) (بإعادة الارسال السريعة)، ان تؤثر على التحكم في الازدحام. وقد تم محاكاة النظام باستخدام برنامج محاكاة (كفاءة النظام من حيث التأخير الزمني ولتاهو القديم وتاهو عندما يحدث الازدحام وعند عدم وجود اي ازدحام او خطأ، والنتائج اظهرت ان تقنية إعادة النقل السريع هي افضل من تقنية تجنب الازدحام.

INTRODUCTION

Most present Internet applications rely on the (TCP) to convey information dependably over the system. (TCP) conveys most of the internet activities, so internet execution depends, all things considered, on how well TCP functions. Execution characteristics of a particular type of TCP are described by the blockage control figuring [2]. Blockage can happen when information touches base from a quick system to a slower arrange. Congestion can likewise happen when various information streams touch base at a switch whose

yield limit is not exactly the entirety of the inputs. TCP is predominantly used to dodge congestion in the system. This paper presents how the Tahoe and Old Tahoe would vary the blockage control of TCP.

1. SERVICES AND PRINCIPLES OF TRANSPORT LAYER

Living between the application and framework layers, the transport layer field is in the focal point of the layered framework plan. It has the fundamental piece of giving correspondence benefits particularly to the application frames running on different hosts. A transport layer field convention accommodates intelligent correspondence between application forms running on various hosts. By "predictable" correspondence, this infers notwithstanding the way that the passing on application techniques are not physically connected with each other (in reality, they might be on various sides of the planet, associated by means of various switches and an extensive variety of connection sorts), from the applications' point of view, it is as if they were physically related. Application shapes use the sensible correspondence gave by the transport layer to send messages to each other, free for the worry of the purposes of enthusiasm of the physical base used to pass on these messages [6].

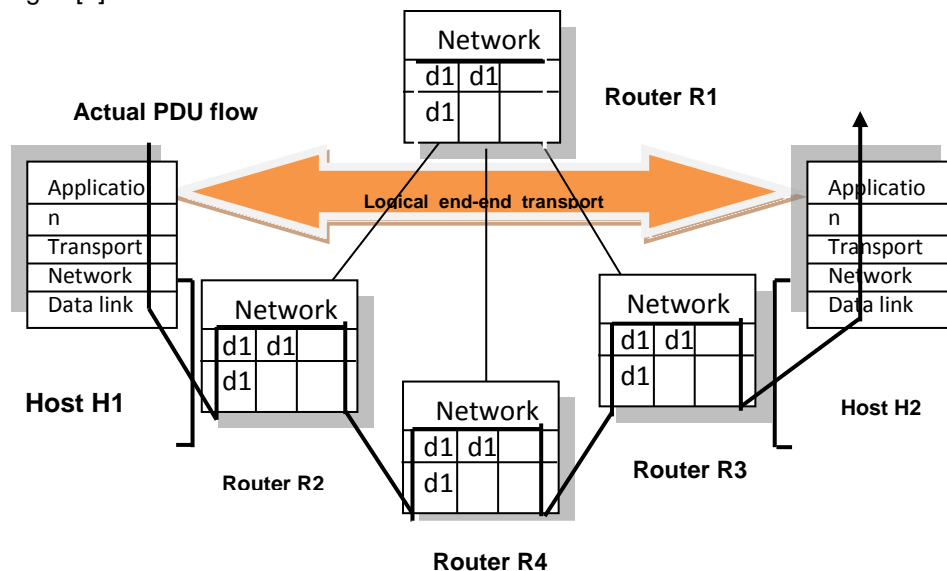


Figure 1: logical communication

As showed up in **Figure** (1), transport layer protocols are executed finally structures yet not in framework switches. Framework switches simply follow up on the system layer fields of the layer-3 PDUs (Protocol Data Unit); they don't follow up on the transport layer fields [6],[9].

At the sending side, the transport layer changes over the messages it gets from a sending application process into 4-PDUs (that is, transport-layer protocol data units). This is done by (maybe) breaking the application messages and adding a transport layer header to each piece to make 4-PDUs. The layer at that point passes the 4-PDUs to the framework layer, where each 4-PDU is exemplified into a 3-PDU. At the receiver side, the layer gets the 4-PDUs from the system layer, removes the transport header from the 4-PDUs, reassembles the messages and passes them to an accepting application process.

A PC system can make more than one layer protocol available to arrange applications. For example, the Internet has two protocols - TCP and UDP (User Datagram Protocol). Each of these protocols gives a substitute course of action of layer organizations to the conjuring application.

All layer protocols give an application multiplexing/demultiplexing organization. This organization will be depicted in purpose of interest in the following area. A transport convention can give different administrations



to conjuring applications, including solid information exchange, data transfer capacity ensures, and defer ensures [6],[9].

2. REVIEW OF THE TRANSPORT LAYER IN THE INTERNET

The Internet and all things considered a TCP/IP system, makes accessible two particular transport-layer conventions to the application layer. One of these protocols is UDP (User Datagram Protocol), which gives a dishonest, connectionless help of the conjuring application. The second of these protocols is TCP, which gives a untrustworthy, connectionless support of the conjuring application. Exactly when arranging a framework application, the application build must decide one of these two transport protocols [6]. The application designer chooses amongst UDP and TCP while making attachments.

The most important commitment of UDP and TCP is to build up IP's transport organization between two end systems to a movement organization between two methods running on the end structures. Extension out host-to-host moves to procedure transmission is called application multiplexing and demultiplexing. UDP and TCP likewise give uprightness checking by incorporating mistake identification header's fields. These two negligible transport-layer organizations, host-to-host data movement and blunder checking - are the fundamental two organizations that UDP gives. Specifically, similar to IP, UDP is a problematic administration - it doesn't promise information sent by one procedure will touch base in kindness to the destination procedure. A convention that gives solid information exchange and blockage control is essentially intricate [11], [12].

3. CONNECTION-ORIENTED TRANSPORT: TCP

TCP is a reliable data trade protocol that is realized over a pass (IP) end to end framework layer. All the more generally, the layer underneath two constantly passing on endpoints may involve a singular physical association (e.g., as on account of a connection level information exchange convention) or a worldwide internetwork (e.g., as on account of a transport level convention). For our motivations, be that as it may, this lower layer basically as a flawed point-to-point channel can be seen.

TCP depends on a large portion of the fundamental standards including mistake location, retransmissions, aggregate affirmations, and clocks for arrangement and affirmation numbers.

The key part of TCP is its ability to give a strong, bi-directional, virtual channel between any two hosts on the Internet. Since the protocol works over the IP framework, which gives simply best-effort administration to conveying parcels over the system, the TCP standard indicates a sliding window based stream control. [2].

3.1. TCP CONNECTION

TCP gives multiplexing, demultiplexing, and blunder location (however not recuperation) in the very same way as UDP. By and by, TCP and UDP contrast from numerous points of view. The most essential distinction is that UDP is not connected, while TCP is association situated. The connectionless of UDP is in light of the fact that it sends information while never building up an association. TCP is affiliation organized in light of the way that before one application method can begin to send data to another, the two procedures should first "handshake" with each other, that is, they ought to send some preliminary parts to each other to set up the parameters of the accompanying data trade. As an element of the TCP affiliation establishment, the two sides of the affiliation will present various TCP "state factors" [7],[8].

3.2. TCP CONGESTION CONTROL.

A TCP association controls its transmission rate by restricting its number of transmitted yet-to-be-recognized portions [5]. Blockage can happen when data connects on a noteworthy pipe such as a quick LAN and gets passed on through a humbler channel which seen in a slower WAN for example. Congestion can likewise happen when diverse data meet up at a switch whose yield constrain isn't precisely the total of the sources of info [6],[9].

3.3. CONTROL ALGORITHMS IN TCP CONGESTION

There are four standard blockage control calculations that are presently in like manner use. Each of the counts noted here was extremely laid out much sooner than the standard was circulated. Their accommodation has easily finished the trial of time. The four counts, Slow Start, Congestion Avoidance, Fast Re transmit and Fast Recovery are depicted underneath [1], [12].

Figure (2) underneath portrays what an average TCP information exchange stage utilizing TCP blockage

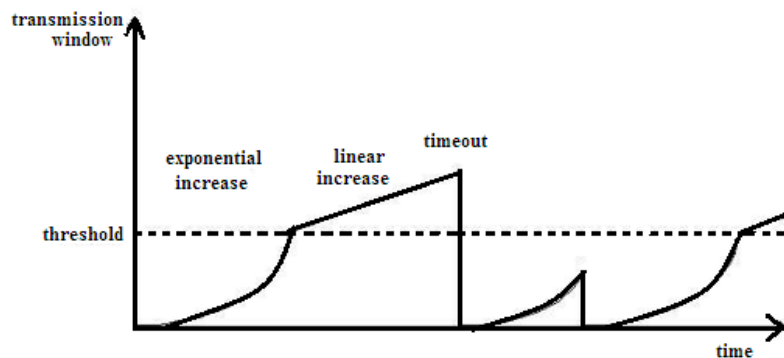


Figure 2: Congestion Control Overview

control may resemble. Notice the seasons of exponential window estimate increase, coordinate augmentation and drop-off, each of these circumstances depicts the sender's response to comprehended or express banners it gets about framework conditions [11], [12].

4. OLD TAHOE AND TAHOE

4.1. OLD TAHOE:

TCP Tahoe is the easiest one out of the four variations. It doesn't have fast recovery.. At congestion avoidance phase, it treats the triple copy ACKs same as timeout. Whenever timeout or triple copy ACKs is gotten, it will perform quick retransmit, decrease blockage window to 1, and enters moderate begin phase.[3],[4].

The supposition of the calculation is that the bundle misfortune brought on by harmed is little may be less than 1%, as needs be the death of a bundle signals obstruct some place in the framework between the source and goal. There are two indications of bundles setback: a timeout phenomenon and the receipt of duplicate ACKs.

Stop shirking and moderate begin requires two factors to be kept up for every association: a Congestion Window (CWND) and a Slow Start Threshold Size(SSTHRESH). Old Tahoe calculation is the mix of moderate begins and blockage evasion. The consolidated calculation works as takes after:

Presentation for a given affiliation sets CWND to one part and SSTHRESH to 65535 bytes. At the point when congestion happens (appeared by a timeout or the social occasion of duplicate ACKs), one-bit of the present window appraise (the base of CWND and the beneficiary's advanced window, however no under two areas) is saved in SSTHRESH. Moreover, if the blockage is appeared by a timeout, CWND is set to one bit, means slow rate.[10].

4.2. TAHOE (QUICK (FAST) RETRANSMIT):

Tahoe variety is the operation that called on the Fast retransmits calculations working with Old Tahoe. TCP may create a fast certification (a copy ACK) when an out-of-ask for segment is escaped ask for, and to tell it what grouping number is normal.

Since TCP does not know whether a copy ACK is realized by a lost bit or just a re-asking for of areas, it sits tight for somewhat number of copy ACKs to be gotten. It is acknowledged that if there is just a reordering of the parts, there will be one and just or two copy ACKs before the re-asked for partition is readied, which will then make another ACK.

In the event that three or more duplicate ACKs are received in a row, it is a strong sign that a bit has been lost. TCP at that point plays out a retransmission of what radiates an impression of being the missing area, without sitting tight for a re-transmission clock to end [8],[10].

5. PROCEDURE:

The network was simulated using Network Simulation to study the congestion control algorithms of TCP.

5.1 SAMPLE 1 (OLD TAHOE):

1- In this Sample **figure 3**,

2 CPE's and 2 Routers are used

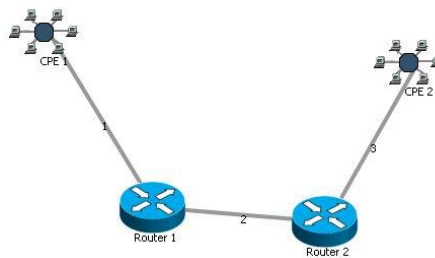


Figure 3: Sample 1 connection

2-Devices which are inter connected, with router1 is CPE1 by Link 1,while CPE2 is connected with Router2 by link 3 in which CPE2 is OFF Transmission in this case
3-Link 2 is connected with Router 1 and Router 2.

Where CPE is customer-provided equipment,

The simulation time was taken for 60 seconds to show the results in **figure 4**, **table 1** represents the utilization for **sample (1)** and **table 2** represents the Delay for **sample (1)**

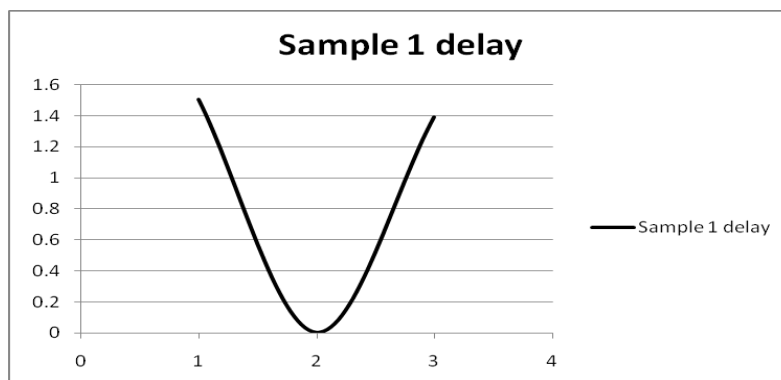


Figure 4: Delay

Table (1) utilization for sample (1)

1	Utilization	70.611 %
1.1	Effective Utilization	67.470 %
1.2	Overhead	2.284 %
1.3	Loss	0.857 %
2	Unutilized	29.389 %

Table (2) Delay for sample (1)

1	Delay	2.900 (ms)	100 %
1.1	Queuing Delay	1.504 (ms)	51.8664 %
1.2	Propagation Delay	0.005 (ms)	0.1724 %
1.3	Transmission Delay	1.391 (ms)	47.9612 %

5.2 SAMPLE 2 (TAHOE):

As shown in **figure 5**,

- 1- Two CPE & Two Routers are used.
- 2- These Inter Connected devices are connected in the following manners:
 - a- Router1 in Link1 connected with CPE1
 - b- Router2 by Link 3 connected with CPE2 which is note in transmission data case
 - c- Link 2 connected with router1 and router2.

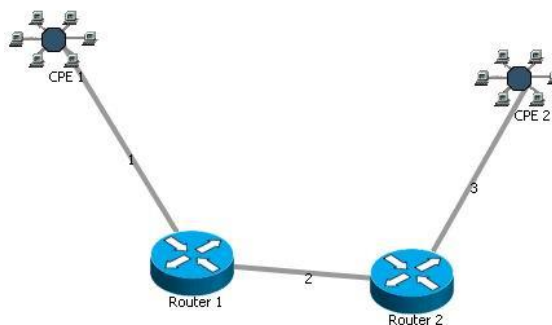


Figure 5: Sample 2 connection

The simulation time was taken for 60 seconds to show the result **figure 6** ,**table 3** represents the utilization for **sample (2)** and **table 4** represents the Delay for **sample (2)**.

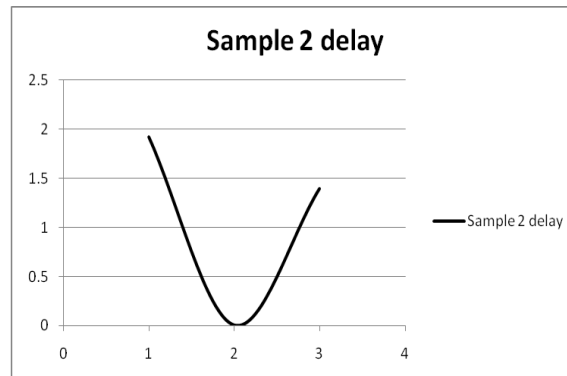


Figure 6: Sample 2 Delay

Table (3) utilization for sample (2)

1	Utilization	83.773%
1.1	Effective Utilization	80.024 %
1.2	Overhead	2.709 %
1.3	Loss	1.040 %
2	Unutilized	16.227 %

Table (4) Dely for sample (2)

1	Delay	3.312 (ms)	100%
1.1	Queuing Delay	1.916 (ms)	57.8420 %
1.2	Propagation Delay	0.005 (ms)	0.1510 %
1.3	Transmission Delay	1.391 (ms)	42.0070 %

5.3 SAMPLE 3 (OLD TAHOE WITH NO CONGESTION AND NO ERROR):

This sample shown in **figure 7** with the following notations:

- 1- 4 CPE & 2 Routers are used.
- 2- The devices are inter connected in the following arrangement:
 - a) CPE 1 and 2 are connected with Router 1 by Link 1 and 2 respectively.
 - b) CPE 3 and 4 are connected with Router 2 by Link 3 and 4 respectively.
 - c) CPE 3 and CPE 4 are not transmitting data in this case.
 - d) Router 1 and Router 2 are connected by Link 5.

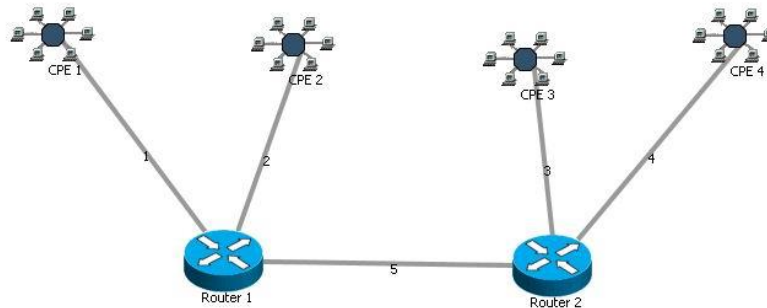
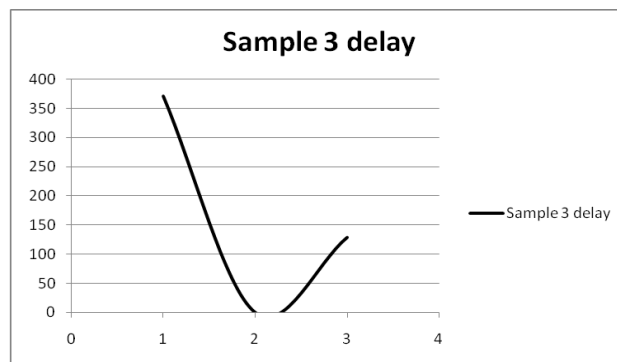


Figure 7: Sample 3 connection

The simulation time was taken for 60 seconds to show the results **figure 8**, **table 5** represents the utilization for **sample (3)** and **table 6** represents the Delay for **sample (3)**



Figur_ (8) Sample 3 Delay

Table (5) utilization for sample (3)

1	Utilization	64.322 %
1.1	Effective Utilization	62.517 %
1.2	Overhead	1.805 %
1.3	Loss	0000 %
2	Unutilized	35.678 %

Table (6) Delay for sample (3)

1	Delay	499.913 (ms)	100 %
1.1	Queuing Delay	371.059 (ms)	74.2247 %
1.2	Propagation Delay	0.005 (ms)	0.0010 %
1.3	Transmission Delay	128.849 (ms)	25.7743 %

5.4 SAMPLE 4 (TAHOE WITH NO CONGESTION AND NO ERROR):

The operation in this Sample is seen as in **figure 9**, in which 4 CPE and 2 Routers are used. The inter connection of sample is done as follow:

1. CPE 1 and 2 with Router 1 by Link 1 and 2 respectively.
2. CPE 3 and with Router 2 by Link 3 and 4 respectively.
3. CPE 3 and CPE 4 are are in case of no transmissions..
4. By Link 5 Router 1 and Router 2 are connected.

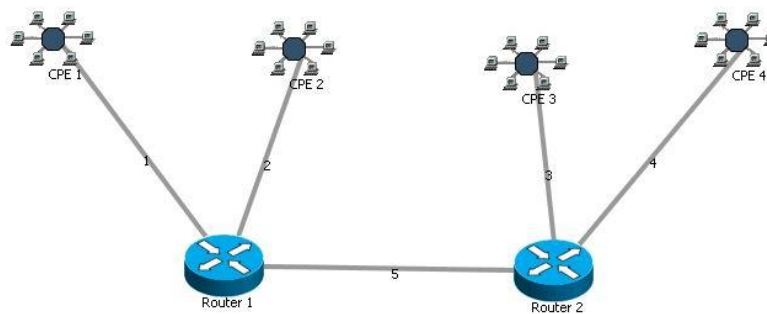


Figure 9: Sample 4 connection

So:

1. The simulation time was taken for 60 seconds to show the results **figure 10**, **table 7** represents the utilization for **sample (4)** and **table 8** represents the Delay for **sample (4)**.
2. The Utilization metric was taken for all samples for comparison as shown in **figure 11**:
3. The Delay metric was taken for all samples for comparison as shown in **figure 12**:
4. The delay for Sample 1 and Sample 2 was shown in **Figure (13)**
5. The delay for Sample 3 and Sample 4 is the same as shown in **Figure (14)**

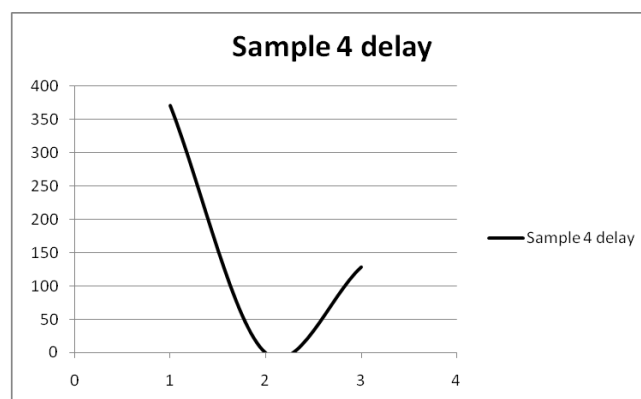


Figure 10: Sample 4 Delay

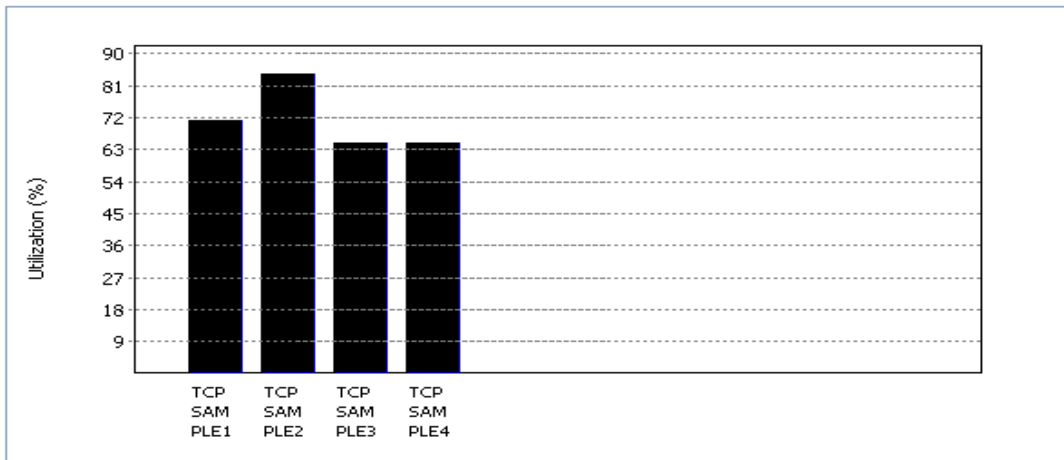


Figure 11: Utilization for all Samples

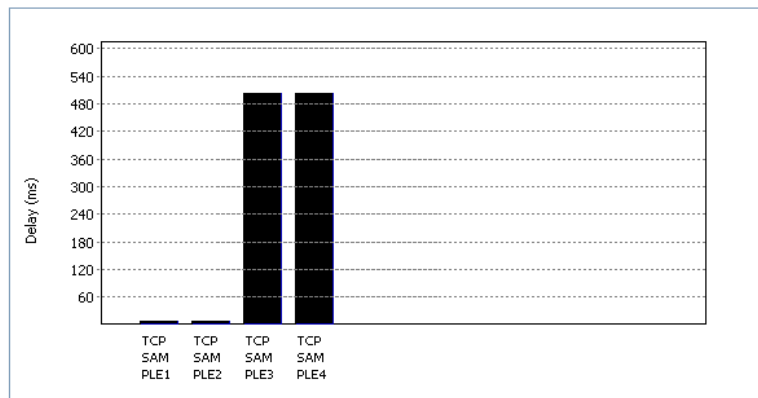


Figure 12: Delay for all Samples

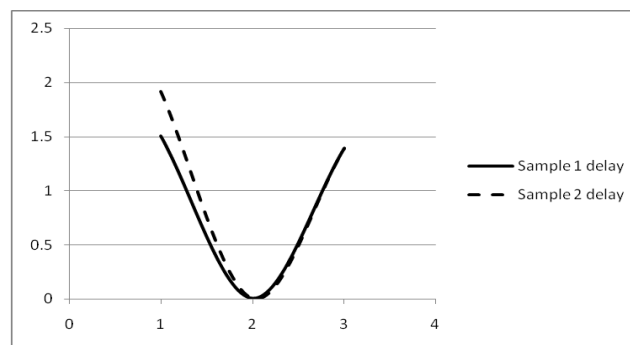


Figure 13: Sample 1 & Sample 2 delays

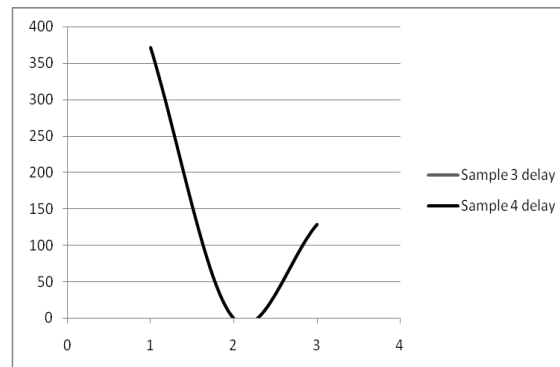


Figure 14: Sample 3 delay is typical on Sample 4 delay

DISCUSSION AND CONCLUSIONS:

- 1- TCP is mainly used for the purpose to avoid congestion in the network.
- 2- When we run the above scenario without TCP, congestion happens in light of the fact that various information streams land at a router whose yield limit (10 Mbps) is not as much as the aggregate of the data sources (16.88Mbps). It increases the number of dropped packets and decreases Utilization.
- 3- When run in a same scenario by using TCP, it helps in avoiding the congestion in the network by using the Old Tahoe congestion control algorithm. It results increase Utilization.
- 4- From sample 1 and sample 2, Old Tahoe and Tahoe Congestion Control Algorithms affect the utilization of the network, differently. Old Tahoe holds up until the point that the Timer terminates before retransmitting a lost bundle. Yet, Tahoe retransmits the lost parcel instantly subsequent to getting three continuous copy ACK's. These outcomes in the expanded bundle transmission and along these lines organize usage and delay were higher on account of Tahoe.
- 5- From sample 1 and sample 2, the delay due to Old Tahoe congestion control algorithm is larger than delay due to Tahoe congestion control algorithm.
- 6- From sample 3 and sample 4, Utilization and delay for Old Tahoe & Tahoe is same because there were no possibility for congestion to happen, CPE 1 & CPE 2 is sending the packets at data rate 64 kbps & R1 is sending the packets at data rate 10mbps.so, there is no possibility for packets dropped, therefore, If there is no congestion, both algorithm works same.
- 7- There were large difference between the delay when no congestion in the network and when the congestion occurs.
- 8- Tahoe (fast retransmit) is the best due to better utilization since TCP plays out a retransmission of what has all the earmarks of being the missing portion, without sitting tight for a re-transmission clock to terminate.

REFERENCES:

1. **Alaa S.G.; Yacine G.D.; Sidi M. S.,** "A Performance Study of TCP variants in terms of Energy Consumption and Average Goodput within a Static Ad Hoc Environment", IWCMC'2006, Vancouver, Canada, Juillet 2006.
2. **Alexander A.; Neil T., Peter R.; and Leonard K.,** " Host-to-Host Congestion Control for TCP ", IEEE Communications Surveys & Tutorials, Vol. 12, No. 3, PP. 304-342, 2010.
3. **Allman, M.; Paxson; V.; and Blanton,** "TCP Congestion Control", RFC 5681. E. 2009.



4. **Fall, K.; and Floyd, S.** "Simulation-based Comparisons of Tahoe, Reno and SACK TCP. ACM SIGCOMM Computer Communication Review", 26(3):5-21. 1996.
5. **Hakim Weatherspoon**, "High Performance Systems and Networking", Cornell University, September 5, 2014
6. **James F. K.; and Keith W. R.**, " Computer Networking A Top-Down Approach Featuring the Internet ", Addison Wisley, 2000.
7. **Jim K.; Keith R.**, "Computer Networking", A Top Down Approach 6th edition Addison-Wesley March 2012
8. **Kevin F.; and Sally F.**, "Simulation-based Comparisons of Tahoe, Reno, and SACK TCP", Lawrence Berkeley National Laboratory One, v0.ps.Z (December 1995) .
9. NetSim Program ver.10
10. **Roman**, "TCP Tahoe, Reno, New Reno, and SACK—a Brief Comparison", A Journey to Software Craftsmanship, November 10, 2011
11. **Van Jacobson**. "Congestion Avoidance and Control. Computer Communications Review", Volume 18 number 4, pp. 314-329,1988.
12. **Van Jacobson**, "Modified TCP Congestion Control Avoidance Algorithm", end to end-interest mailing list, 1990.