

## Milium of the Nipple

Li-wen Zhang<sup>1</sup>, Juan Wu<sup>2</sup>, Ling-yi Zhao<sup>1</sup>, Tao Chen<sup>1</sup>

<sup>1</sup> Department of Dermatovenereology, Chengdu Second People's Hospital, Chengdu, Sichuan, China

<sup>2</sup> Sexually Transmitted Disease Institute, Shanghai Skin Disease Hospital, School of Medicine, Tongji University, Shanghai, China

**Citation:** Zhang L, Wu J, Zhao L, Chen T. Milium of the Nipple. *Dermatol Pract Concept*. 2022;12(2):e2022086. DOI: <https://doi.org/10.5826/dpc.1202a86>

**Accepted:** October 7, 2021; **Published:** April 2022

**Copyright:** ©2022 Zhang et al. This is an open-access article distributed under the terms of the Creative Commons Attribution-NonCommercial License (BY-NC-4.0), <https://creativecommons.org/licenses/by-nc/4.0/>, which permits unrestricted noncommercial use, distribution, and reproduction in any medium, provided the original authors and source are credited.

**Funding:** None.

**Competing interests:** None.

**Authorship:** All authors have contributed significantly to this publication.

**Corresponding author:** Tao Chen, Department of Dermatovenereology, Chengdu Second People's Hospital, 165 Caoshi Street, Chengdu 610017, Sichuan, China. E-mail: [13980427003@163.com](mailto:13980427003@163.com)

### Case Presentation

A 4-year-old boy presented with a 1-year history of a single pearly white papule on the right nipple (Figure 1A). No previous skin inflammation or trauma was observed at the same location. The left nipple was normal. His growth and psychomotor development were normal. The dermoscopy showed a pearly white rounded structure with branching vessels (Figure 1B). Histopathology showed an epidermoid cyst containing keratinous material (Figure 1C). The diagnosis of milium was made.

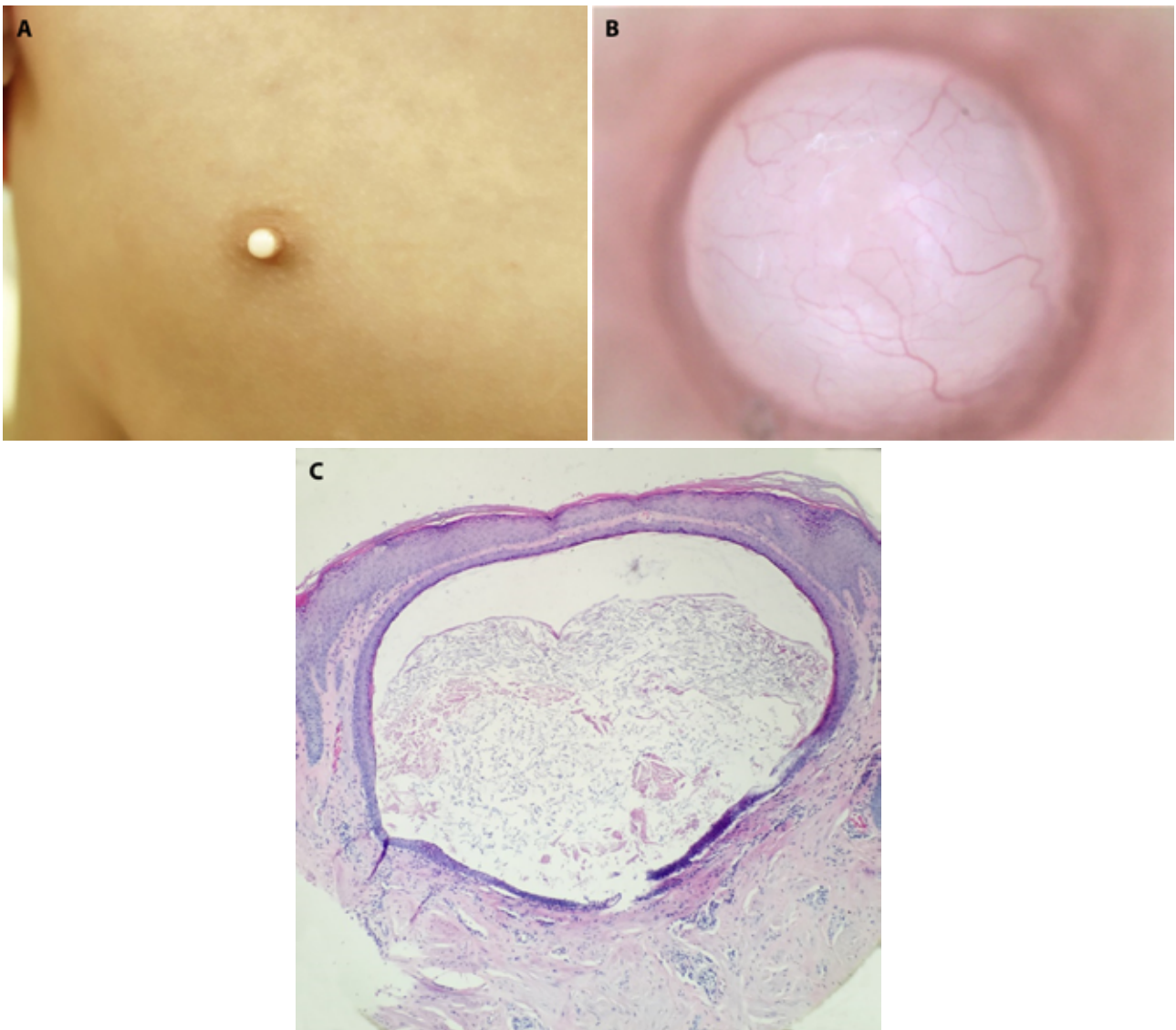
### Teaching Point

Milium is a common benign keratinous cyst characterized by pearly white dome-shaped lesion of 1 mm to 4 mm in diameter, but the involvement of the nipple seems to be rare and bigger. Milium may occur as either primary or secondary lesions. Four cases of milium involving the nipple were

found by searching PubMed databases [1,2]. Among them, the male-to-female ratio was 1:3; the age range was from 6 to 16 months. They presented a unilateral single pearly white dome-shaped papule with a diameter of 3 mm to 8 mm. Three cases underwent surgical excision, and 1 spontaneously disappeared. The dermoscopic manifestation shows a white or yellowish-white rounded structure with linear or branching vessels. The differential diagnosis includes molluscum contagiosum, calcinosis cutis, juvenile xanthogranuloma, and syringoma.

### References

1. Ferreira MG, Salgado MB. Congenital Milium of the Nipple. *Pediatr Dermatol*. 2017;34(1):E28–E29. DOI: [10.1111/pde.13010](https://doi.org/10.1111/pde.13010). PMID: 27778385.
2. Jain S, Sarkar R, Garg VK, Khurana N. Epidermal inclusion cyst or giant milium of the nipple. *Indian J Dermatol Venereol Leprol*. 2012;78(1):103–105. 2011/12/27. DOI: [10.4103/0378-6323.90960](https://doi.org/10.4103/0378-6323.90960). PMID: 22199072.



**Figure 1.** (A) A single pearly white papule on the right nipple. (B) The dermoscopy showed a pearly white rounded structure with branching vessels. (C) Histopathology showed an epidermoid cyst containing keratinous material (H&E;  $\times 100$  magnification)