

# Dermatoscopy: A multicolored lesion on the forehead

Engin Şenel<sup>1</sup>

<sup>1</sup> Hitit University Faculty of Medicine, Department of Dermatology, Çorum, Turkey

**Keywords:** cutaneous carcinoma, skin cancer, basal cell carcinoma, pigmented basal cell carcinoma, dermatoscopy, dermoscopy

**Citation:** Senel E. Dermatoscopy: A multicolored lesion on the forehead. *Dermatol Pract Concept*. 2014;4(3):14. <http://dx.doi.org/10.5826/dpc.0403a14>.

**Received:** December 20, 2013; **Accepted:** December 20, 2013; **Published:** July 31, 2014

**Copyright:** ©2014 Şenel. This is an open-access article distributed under the terms of the Creative Commons Attribution License, which permits unrestricted use, distribution, and reproduction in any medium, provided the original author and source are credited.

**Funding:** None.

**Competing interests:** The authors have no conflicts of interest to disclose.

**Corresponding author:** Engin Şenel, M.D., BBA, Hitit University Faculty of Medicine, Department of Dermatology, 19200 Çorum,

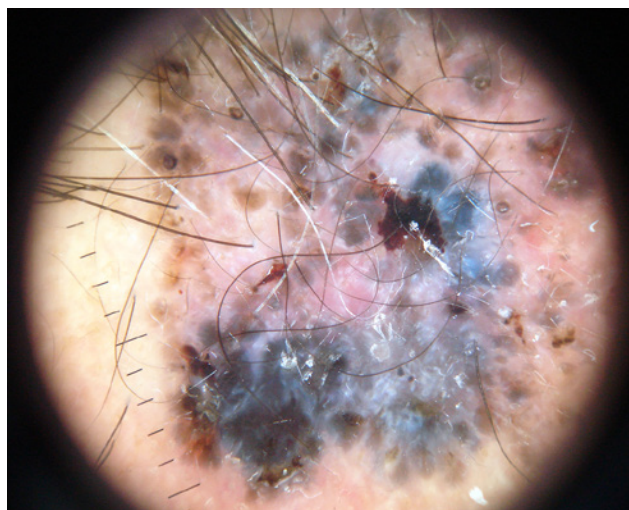
Turkey. Tel.: +90 364 2230300. Fax: +90 364 2230323. E-mail: [enginsenel@enginsenel.com](mailto:enginsenel@enginsenel.com)

## The patient

A 48-year-old man presented with a two-year-history of a slowly growing pigmented lesion on his forehead. Dermatological examination revealed an irregular, multi-colored papule with a diameter of 25 x 26 mm (Figure 1). Dermatoscopic examination disclosed blue-gray globules, leaf-like structures and structureless areas (Figures 2, 3).



**Figure 1.** Pigmented lesion on forehead. [Copyright: ©2014 Senel.]



**Figures 2, 3.** Dermatoscopy: blue-gray globules, leaf-like structures and structureless areas. [Copyright: ©2014 Senel.]

## What is your diagnosis?

Please send your answer to [dpc@derm101.com](mailto:dpc@derm101.com). The first correct answer will receive a DL3N hand dermoscope [cordially

sponsored by 3GEN]. The case and the answer to the question will be presented in the next issue of *Dermatology Practical & Conceptual*.