

Dermatoscopy: What is your diagnosis?

Esther Azizi, M.D.¹

¹Dermatology Section, Sackler Faculty of Medicine, Tel Aviv University, Israel

Citation: Azizi E. Dermatoscopy: What is your diagnosis? *Dermatol Pract Conc.* 2013;3(1):11. <http://dx.doi.org/10.5826/dpc.0301a11>.

Copyright: ©2013 Azizi. This is an open-access article distributed under the terms of the Creative Commons Attribution License, which permits unrestricted use, distribution, and reproduction in any medium, provided the original author and source are credited.

Corresponding author: Esther Azizi, M.D., Dermatology Section, Sackler Faculty of Medicine, Tel Aviv University, Ramat Aviv, 69978, Israel. Email: esaz1@post.tau.ac.il.



Figure 1. Clinical image. [Copyright: ©2013 Azizi.]



Figure 2. Clinical close-up. [Copyright: ©2013 Azizi.]

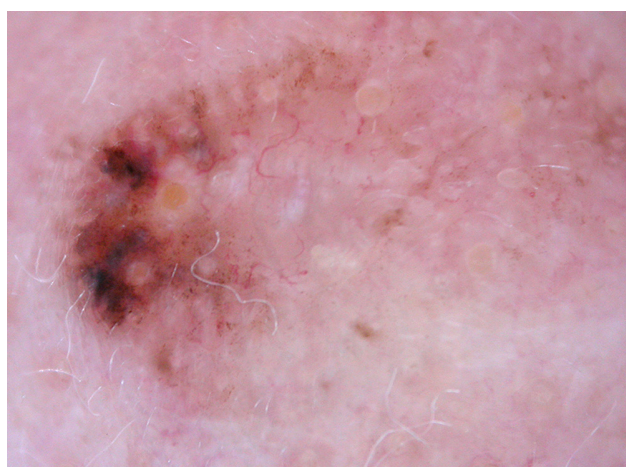


Figure 3. Dermatoscopy. [Copyright: ©2013 Azizi.]

The patient

An 83-year-old woman presented with a pigmented lesion on her nose, which she had noticed in the last year (Figure 1). A close-up showed a small irregular papule about 5 mm in diameter (Figure 2). Dermatoscopy showed a chaotic pattern composed of brown, blue and gray clods and dots and structureless zones (Figure 3).

What is your diagnosis?

Please send your answer to dpc@derm101.com. The first correct answer that is received will receive a complimentary copy of the book *Dermatoscopy: An Algorithmic Method Based on Pattern Analysis* [Facultas Verlag, 2011].

The case and the answer to the question will be presented in the next issue of *Dermatology Practical and Conceptual*.

Answer to October 2012 quiz

The correct answer to the dermatoscopy quiz in the October 2012 issue is **recurrent nevus**.

Please see article 8 of this issue of *Dermatology Practical and Conceptual* for a detailed description of this case and other examples of recurrent nevi with dermatoscopic/dermatopathologic correlation (<http://dx.doi.org/10.5826/dpc.0204a10>).

Congratulations to Dr. Mohamad Shizarpour who was the first to send us the correct answer to this quiz!