

Two Houses at Haslett Street, Eden Terrace, Auckland, 1989-90

Neil Kirkland and Kim Sinclair

Neil Kirkland and Kim Sinclair graduated from the School of Architecture, University of Auckland, practice Architectural Design and Construction in Auckland. They have completed a number of private dwellings.

*Sinclair and Shouler House
Design: Kim Sinclair
Builders: Neil Kirkland and Kim Sinclair*

*Kirkland House
Design: Neil Kirkland
Builders: Neil Kirkland and Kim Sinclair*



opp. Worm's eye isometric of
Nor-Western corner of
Kirkland House

View from Haslett Street
(West).

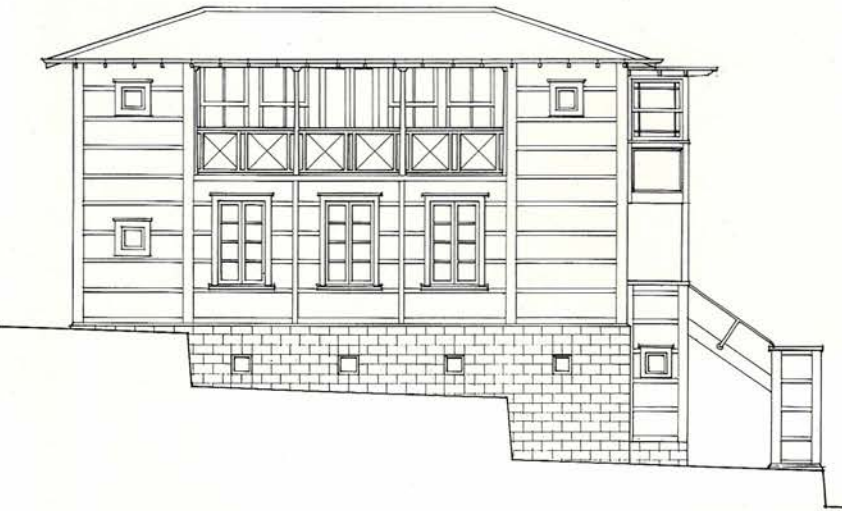


Plan

Legend

- 1. Living Room
- 2. Sofa (Hall)
- 3. Bedroom
- 4. Oda (Rooms)
- 5. Loggia
- 6. Study

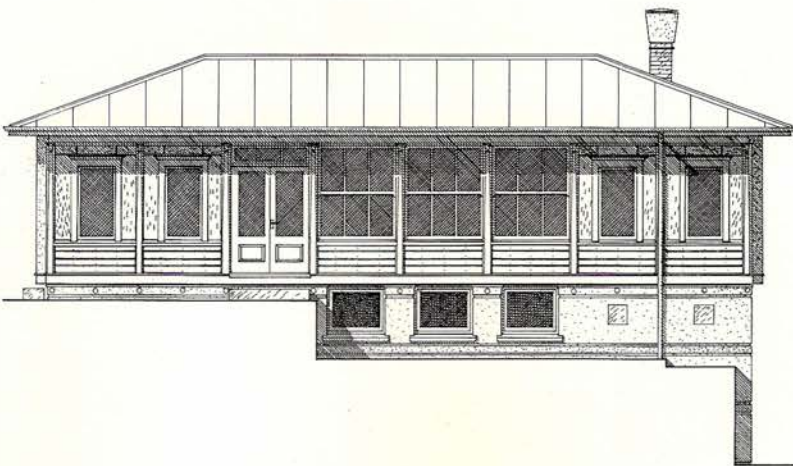
- 7. Kitchen
- 8. Bathroom
- 9. Laundry
- 10. Fountain
- 11. Pergola



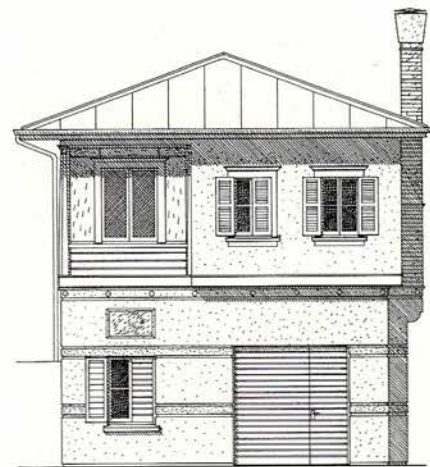
Sinclair and Shouler House: North Elevation



Sinclair and Shouler House: West Elevation



Kirkland House: Nor-West Elevation



Kirkland House: Sou-West Elevation



Sinclair and Shouler: Bedroom and on to Loggia



Sinclair and Shouler: View from Nor-East

