

**MOORE OR LESS HOUSE
COTTESLOE, WESTERN AUSTRALIA**

Simon Anderson



HENRY REVELEY. Round House, 1829.

The Round House, a small prison, is the oldest extant building in Western Australia. It was designed by Henry Reveley and is presumed to be inspired by his father's well-known design for Jeremy Bentham's panoptic prison. It is an architecture of sheer and smooth wall surfaces and fluid space, built by the unskilled in an expansive new world to confine the lawless. Durable and robust, not particularly repressive, an ideal gesture in a pragmatic world, soon too small for its purpose—altogether a perfect model for a modest house to be built by the clients themselves in a topographically similar location.

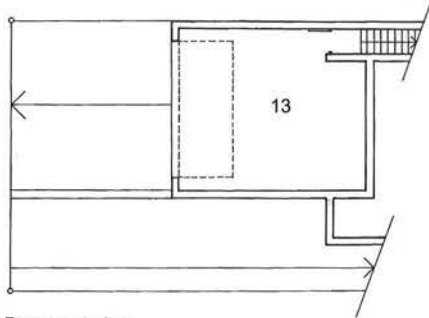
The Moore or Less House was designed for a photographer and design couple—two bedrooms and two studies to permit working from home in the future. It was designed as a compromised Round House, but instead of concentrating vision within, its voids allow the House to capture views to the west above neighbours (without overlooking) to Norfolk Island pines and the Indian Ocean.

The house is built in the manner of the commercial vernacular, so much so that a garage tilt-a-door was included. Brick piers give the House a certain agedness, their disengagement an ageless uncertainty.

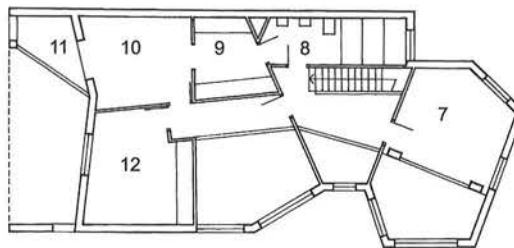
During the design stage, the clients became interested first in the Oriental, and then in the Price/O'Reilly House by Engelen Moore (George St, Redfern, 1995). So further compromises were made: an Islamic porch or talar was added, an uneasy symmetry emerged and a monochromatic interior developed. However the articulated structural piers and flayed service areas give the House sufficient life to accommodate stylistic modification.

Office warehouse, East Perth.



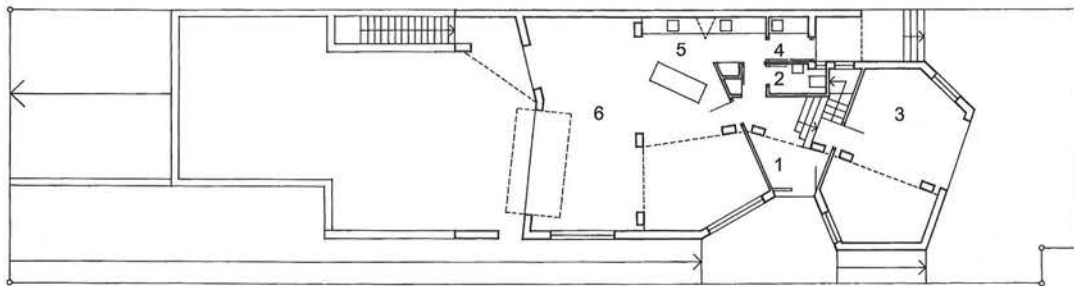


Basement plan



First floor plan

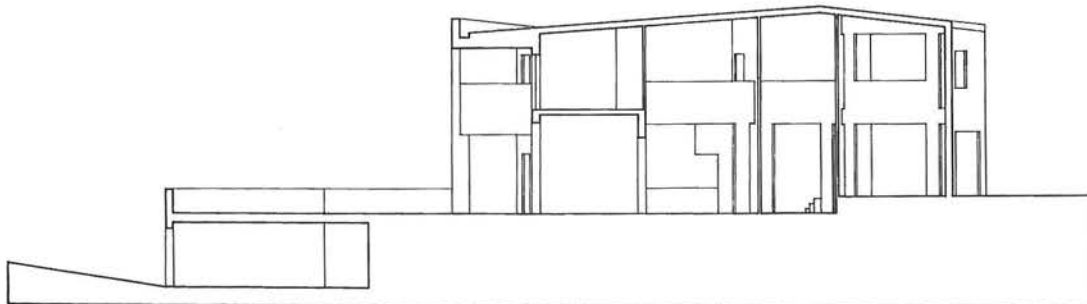
- 1 Entry
- 2 Powder
- 3 Study 1
- 4 Laundry
- 5 Kitchen
- 6 Living/dining
- 7 Study 2
- 8 Bathroom
- 9 Dressing
- 10 Bedroom 1
- 11 Balcony
- 12 Bedroom 2
- 13 Garage

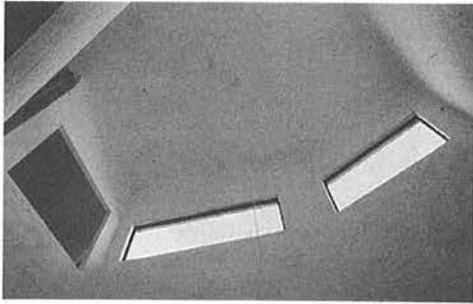


Ground floor plan

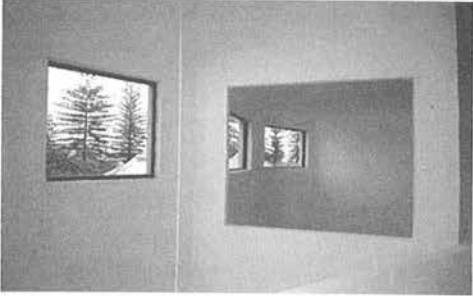


Longitudinal section





Typical house with talar, Yazd Iran.



Exterior photographs by Robert Frith.
Interior photographs by Gaylene Trethewey.