

## Lexical Variations of Coastal and Mountain Javanese in Jepara Indonesia: A Sociodialecology Study

Elly Fardzilatin<sup>1\*</sup>,  
Muhammad Suryadi<sup>2</sup>

<sup>1,2</sup>Department of Linguistics, Faculty of Humanity Diponegoro University  
Indonesia

\*[ellyfardzilatin@gmail.com](mailto:ellyfardzilatin@gmail.com)

Article History: Submitted on 13<sup>th</sup> June 2022, Revised on 24<sup>th</sup> June 2022,  
Accepted on 29<sup>th</sup> August 2022; Published on 31<sup>st</sup> December 2022

### ABSTRACT

This study aims to determine the variation of the Javanese language lexicon in the coastal and mountainous areas of Jepara Regency. This study used a qualitative approach. Data were collected by using the method of listening, speaking, interviewing and taking notes. The researcher conducted this study by listening, participating in the conversation and listening to the contents of the direct information conversation. Furthermore, the researcher used interview techniques in order to find as much data as possible. The researcher used a note-taking technique in order to record the data which had been obtained from the informant. The results of this study find 15 variations of the lexicon consisting of 5 gloss of basic vocabulary, 2 gloss of this disease and disorder, 1 gloss of livestock and animals, 3 gloss of goods and equipment, 1 gloss of this culture, said work has 2 gloss, and this adjective has 1 gloss. Phonological differences are found in the coastal and mountainous areas of Jepara.

**Keywords:** sociolinguistics, dialect, javanese, accent, lexicon.

### INTRODUCTION

Indonesia is a large archipelagic country with thousands of cultures and hundreds of regional languages that are not found in other countries. According to (Budiwiyanto, 2003), regional languages are the languages used by some ethnic communities to communicate. Language is a construction which does not have an object but it cannot be separated from people who use language. This communication process is a process towards other people who use symbols, sound symbols or writing as a medium. Symbols in a

communication occur by using signs, images, color, and so on. Furthermore, language can be used to store an idea which can later be conveyed properly to the person who is communicating. Language cannot be separated from dialect and accent. Language variations can be caused by many factors, such as geographical location, social hierarchy, and the respective professions in the speech group understand each other (Parera, 1991). These variations are influenced by social patterns and geographical environments (Keraf, 1996). Dialect variation is a variety of languages between speakers of one and speakers who are other and have differences in their expression in both forms and its meaning (Wijayanti, 2016). Dialect variations are based on region or the area where the speaker lives. Thus, the dialect is commonly called as the areal dialect, regional dialects or geographic dialects (Susanto, 2016). Moreover, a dialect is a variation of a language spoken by a group of people who has the characteristic of distinguishing one group from another. Meanwhile, according to Greek the dialect is called as dialect which means a variant of a language according to the wearer (Indrariansi, E. A., & Ningrum, 2017). Dialects have two types there are geographical dialect and social dialect. Geographical dialect cannot be separated from its geographical location (Mahsun, 1995), Meanwhile, what is meant by social dialect is that this language cannot be separated by a group or person or between groups (Zulaeha, 2010). Usually a group is classified according to age, activities they do, gender, occupation, education level, and so on.

Dialectology and sociolinguistics have something in common, they both discuss language variations. This dialectology is more inclined to language variations which come from differences in places that exist within a language area. Meanwhile, in sociolinguistics, it discusses the variation of language which is used by one social group to another social group which will be distinguished using another social group. The difference can be seen from the age factor, occupation, and the level of education factor (Nadra dan Reniwati, 2009). Dialectology and sociolinguistics are interrelated because in the study of dialectology, the use of sociolinguistic studies can explain the dialect used in the cultural center to other dialects. Whereas in sociolinguistic studies, data from dialectological research can provide aspirations or initial data in the research.

In the study of dialectology, the description of the differences in linguistic elements includes phonology, morphology, syntax, lexicon, and semantics. Phonological differences involve phonological differences which can be in the form of sound correspondence and sound variations. Phonology which views the sounds of the speech as part of language systems are commonly referred to as phonemics (Muslich, 2017). The dialect in each region has its own characteristics as a differentiator from one region to another. According to (Kurniawan, 2013) variations can be in the form of differences in a person's speech, such as pronunciation and intonation.

In Indonesia, socio-dialectological studies that have been carried out by several researchers, one of which was conducted by (Erfina Cahyanti,

2016) with title "The Use of the Javanese Language in Purworejo Regency (Socio-dialectological Studies)." Furthermore, the research which had conducted by Cahyanti showed that the Javanese language in Purworejo Regency has seven vowel phonemes and twenty-one consonant phonemes. It is found the presence of consonant clusters and phonological variations which stem from differences in the group of speakers from a social and geographical perspective. Moreover, she found a variety of onomasiological lexicon, metathesis, apheresis, syncope, prosthesis, and epenthesis. In addition, she found variations of *ngoko* which were marked by *ngoko*, while this variation of *krama* which was characterized by the presence of a marker characterized by phonological, morphologically marked and characterized by the presence of lexical markers.

Second, (Kawasari, 2017) had conducted a study entitled Variations in the Use of Javanese Language in Rural Farming Communities (Social Dialectology Studies in Banaran Kulon Village, Bagor District, Nganjuk Regency). The research method was conducted by using an instrument of 350 questions which have been arranged based on their categories that have 11 meaning fields, 1 other and 1 group of phrases and sentences. In addition, Nitrite used the basic separator technique and advanced techniques. The results of the research which had conducted by nitrite showed this lexicon variation having 11 meaning fields.

Third, research which had conducted by (Putu Devi Maharani, 2017) entitled South Kuta Dialect Balinese Language Variations (Socio Dialectological Studies). The aim of her study is that to look at the lexical and sound or phonological variations contained in the Balinese dialect; especially, in the Jimbaran, Kedonganan and Ungags areas; besides, to find the factors which cause these variations. Lexical variations in Maharani's research are in the pronoun, noun, verb, adjective, and adverbial classes. In the phonological variation, it was found that there are 7 variations in Jimbaran, 5 variations in Kedonganan, and 7 variations in Ungasan. The phonological variation also analyzes the phonological rules in order to find out in what environment some morpheme sounds will change in each dialect. (Rosyadi, 2017), (Andini, 2017) and (Sari, 2018) related to the lexicon, research that has been conducted by (Hastuti, 2018), (Antono, A., Zulaeha, I., & Baehaqie, 2019), (Antono, 2019) (Kartikasari, 2022), (Jayaraj, 2020) and (N, Leo Nella Rizki, 2021) is related to phonology and lexical. Research that has been carried out by (Junaidi, Yani, J., 2016), (Farikha, 2022), (Widayani, 2015), (Rahayu, 2012), (Purwanti, 2015) and (Ocktarani, 2011) related to dialect variations in dialectology studies.

Research based on socio-dialectology studies on the use of Javanese in Batang Regency still needs to be continued. Research which had conducted by (Wiladati, 2014) only looked at the emergence of variations in the Batang Javanese language from a geographical point of view. In addition, the previous research which had conducted by (Sasongko, 2015) with a

sociodialectological approach was still limited to the lexical level at one observation point, namely Ngadirejo Village.

From the previous studies above, researcher can see how variations in the Javanese language are used. The above studies can find that it will be interesting to try to compare the use of coastal Javanese and mountainous Javanese. In this study, the tried to analyze how the coastal Javanese language and the mountainous language are used. Variations in the use of coastal Javanese and mountain Javanese languages had been studied by several previous researchers; such as, Eva (2017) who analyzed contrastive studies: coastal and mountainous Javanese dialects in Pemalang Regency. This study has similarities with previous researchers that both studying lexicon variations. Therefore, the researcher try to explore a comparison of the lexicon variations of coastal and mountainous communities in Jepara Regency. The research which is being conducted by this researcher is different from the existing research, but they have similarities that both discuss about lexicon variations. The difference is that research will be conducted is focused on the variations of the lexicon of coastal and mountain communities in Jepara district.

Based on the definitions above, the research entitled Variations in the Use of Coastal and Mountain Javanese Language in Jepara Regency: Sociodialectological Studies is very interesting to study because it can see the diversity of Jepara dialects. Through this dialectical study, the researcher tries to offer the advantage of knowledge from the whole dialogue so that many parties seek help. By studying the evolution of coastal and mountainous Javanese, it will also be shown how much Javanese language, especially in Jepara, is related to the Javanese dialect which is a variant of the language so that it accepts and respects the diversity of Indonesian ethnic languages that exist.

## METHOD

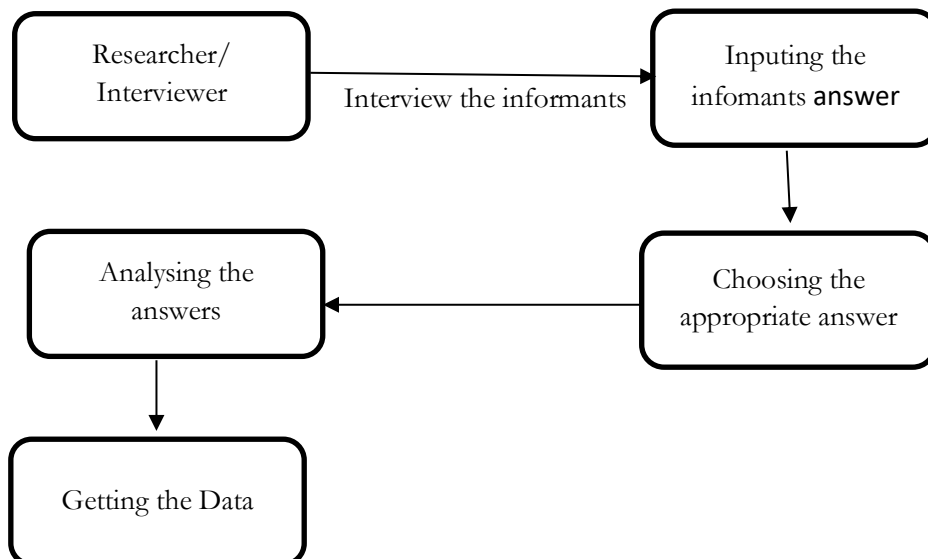
Data collection was conducted by using the method of listening, speaking, interviewing and taking notes. The researcher conducted this study by listening, participating in the conversation and listening to the contents of the direct information conversation. The researcher used interview techniques in order to find as much data as possible. Moreover, the researcher used a note-taking technique to record the data which had been obtained from the informant. There are 12 informants who were interviewed by the researcher, who had been selected by the researcher. These 12 people were natives from the observation point taken by the researcher. The age of the informants selected by this researcher had an age between 40-60 years.

Moreover, the population of the study was taken by this researcher that was the entire community of Javanese speakers in Jepara Regency which was spread over four points of observation area, that were the

observation point is in Bondo Village, Bangsri District, the observation point is in Karanggondang Village, Mlonggo District, and the observation point is in Bantrung Village Batealit District and the observation point were in Plajan Village, Pakis Aji District. The selected village is considered capable of bringing up lexicon variants. The variation of the lexicon in this research village is due to the influence of the people who use the Javanese language in the Jepara district. In TP 1 and 2, Jepara Regency is a coastal area close to urban centers, industry and trade. TP 3 is located in a hilly area close to the city center, industry. TP 4 is located in a hilly area which is a bit far from the city center. In addition, the sample used in this study was taken from native Javanese speakers who stayed and were native to the observation point area in Jepara Regency with resource criteria which had been determined by the researcher.

In the research which had been conducted, the data which had been collected and analyzed in terms of shape and sound were presented according to the data being contrasted and categorized. The presentation of the results of data analysis used the information method that were the presentation of the results of the analysis using words and did not use symbols or direct symbols (Sudaryanto, 2015). In the method of presenting the results of this data analysis, the researcher described or explained the results of the study.

Chart 1:  
Diagram Process of Interview



## FINDINGS AND DISCUSSION

Dialect is a variation of language originating from a group or someone who speaks which has a relative number that differs from one region to another (Abdul Chaer, 2014). This dialect can be distinguished from its vocabulary, grammar, and also can be distinguished from its pronunciation.

This mountain community in the district of Jepara, most of their main work as farmers. Most of these highlands have springs directly from the mountain. The water that comes from this mountain is usually used by local residents for their daily life. Very clearly different from coastal communities, the very hot atmosphere and conditions close to the sea make these coastal communities become strong, black or brown people, and this also affects when their voice communication tends to be loud when talking to coastal communities, louder, and also faster. The communication of this coastal community is likened to the same as the waves that are rolling to the shore and the scorching and hot sun in this coastal area which is very close to human skin.

### 1. Variations in the Use of the Java Language

The lexicon consists of word forms and meanings. Lexicon is a field that examines the form and meaning of words (Sariono, 2016). This variation in the use of the Javanese language is a variation of the Javanese language used or spoken by coastal communities and mountain communities in Jepara district. The lexicon variants at four observation points in Jepara Regency found 15 lexicon variants, which can be seen in the data below:

#### a. Recline

*Baring* was found at the observation point in Bondo Village, Bangsri District, the observation point was in Karanggondang Village, Mlonggo District, the observation point was in Tempur Village, Keling District and the observation point was in Plajan Village, Pakis Aji District, speakers say the word 'baring' has 2 lexicon namely:

Table 1:

No	Jepara Mountains area	Jepara Coastal area
1	<i>[lelele-lelele]</i>	<i>[gluntun]</i>

Speakers who use the word *[lelele-lelele]* are usually used by mountain people, namely at the observation points at numbers 3 and 4, those who use the word *[lelele-lelele]* are from children to the elderly. Meanwhile, coastal communities in Jepara Regency are more likely to use the word

[*gluntuy*] found at observation points 1 and 2, usually those who use the word [*gluntuy*] are older to younger or of the same age or age.

There are differences in the lexicon based on mountain communities and coastal communities. These mountainous communities prefer to use the Javanese language lexicon using [*kelēb-kelēb*], while the coastal communities prefer to use the Javanese language lexicon using [*gluntuy*].

### b. Split

The observation point is in Bondo Village, Bangsri District, the observation point is in Karanggondang Village, Mlonggo District, the observation point is in Tempur Village, Keling District and the observation point is in Plajan Village, Pakis Aji District, the speaker pronounces the word 'split'. lexicon, namely:

Table 2:

No	Jepara Mountains area	Jepara Coastal area
1	[ <i>parɔ</i> ]	[ <i>ɲiris</i> ]
2	[ <i>məcah</i> ]	[ <i>ɲigar</i> ]

Speakers who use variations of the lexicon [*ɲigar*], [*ɲiris*] are used in coastal communities at observation points 1 and 2, use variations of the lexicon [*ɲigar*], [*ɲiris*] to communicate in daily life, this is used by children to the elderly. Meanwhile, the mountainous community prefers to use the lexicon variation [*parɔ*], [*məcah*], which is found at the observation points at numbers 3 and 4, the word lexicon variation [*parɔ*], [*məcah*] is used by children to the elderly.

### c. Dig

The observation point is in Bondo Village, Bangsri District, the observation point is in Karanggondang Village, Mlonggo District, the observation point is in Tempur Village, Keling District and the observation point is in Plajan Village, Pakis Aji District, speakers say the word 'dig' has 4 lexicon, namely:

Table 3:

No	Jepara Mountains area	Jepara Coastal area
1	[ <i>ndudu?</i> ]	[ <i>macul</i> ]
2	[ <i>ɲaru?</i> ]	[ <i>kədu?</i> ]

The lexicon variants [*ndudu?*], [*macul*], [*ɲaru?*], and [*kədu?*] differ in the use of coastal communities and mountain communities. These coastal communities prefer to use the language variations [*macul*] and [*kədu?*]

found at observation points 1 and 2, while these mountainous communities prefer to use language variations [ndudu?] and [ɲaru?] located at the observation point in number three and observation point four.

#### d. Mother

The observation point is in Bondo Village, Bangsri District, the observation point is in Karanggondang Village, Mlonggo District, the observation point is in Tempur Village, Keling District and the observation point is in Plajan Village, Pakis Aji District.

Table 4:

No	Jepara Mountains area	Jepara Coastal area
1	[ma?ɛ]	[ma?]
2	[mbɔʔ]	[ibu]

Variant lexicon This mother has lexicon variations, namely [ma?ɛ], [mbɔʔ], [ma?], [ibu] has a different variant of this lexicon found in the use of coastal communities and mountain communities. This variation of the [ma?ɛ] and [mbɔʔ]. The lexicon is preferred by the mountainous community at observation point number three and observation point four. In contrast to these coastal communities, they prefer to use the variants of the lexicon which [ma?] and [ibu] can be seen at observation point one and observation point two.

#### e. Narrow

The observation point is in Bondo Village, Bangsri District, the observation point is in Karanggondang Village, Mlonggo District, the observation point is in Tempur Village, Keling District and the observation point is in Plajan Village, Pakis Aji District, speakers say the word 'Narrow' has 3 lexicon, namely:

Table 5:

No	Jepara Mountains area	Jepara Coastal area
1	[cint]	[səsək]
2	[ciliʔ]	-

Variants of this mother's lexicon have lexicon variations, namely [səsək], [ciliʔ] and [shrink]. The different variants of this lexicon are found in the use of coastal communities and mountain communities. This variation of the lexicon [ciliʔ] and [shrink] is preferred by the mountain community at the point of observation at number three and point of observation four. In contrast to these coastal communities, they prefer to use a variant of the [səsək] lexicon which uses a variation of the [səsək]



lexicon which in general can be seen at observation points one and observation points two.

#### f. Black Skin

The observation point is in Bondo Village, Bangsri District, the observation point is in Karanggondang Village, Mlonggo District, the observation point is in Tempur Village, Keling District and the observation point is in Plajan Village, Pakis Aji District, speakers say the word 'black skin' has 4 lexicon namely:

Table 6:

No	Jepara Mountains area	Jepara Coastal area
1	[ <i>glɪnsəŋ</i> ]	[ <i>irəŋ</i> ]
2	[ <i>ŋgənsəŋ</i> ]	[ <i>klumut</i> ]

This 'black' lexicon variant has lexicon variations, namely [*irəŋ*], [*klumut*], [*glɪnsəŋ*] and [*ŋgənsəŋ*] have different variants This lexicon is found in the use of coastal communities and mountain communities. The variations of the lexicon, [*glɪnsəŋ*] and [*ŋgənsəŋ*] are preferred by the mountain community at the observation point number three and observation point number four. In contrast to these coastal communities, they prefer to use a variant of the lexicon which [*irəŋ*], [*klumut*], can be seen at observation point one and observation point two.

#### g. Stomach pain

The observation point is in Bondo Village, Bangsri District, the observation point is in Karanggondang Village, Mlonggo District, the observation point is in Tempur Village, Keling District and the observation point is in Plajan Village, Pakis Aji District, the speaker pronounces the word 'stomach ache' has 3 lexicon namely:

Table 7:

No	Jepara Mountains area	Jepara Coastal area
1	[ <i>sənəp</i> ]	[ <i>loro wətəŋ</i> ]
2	[ <i>suduʔan</i> ]	-

The lexicon variant of this 'stomach ache' gloss has lexicon variations, namely [*sənəp*], [*suduʔan*] and [*loro wətəŋ*]. use in Jepara district in coastal communities and mountain communities. The variations of the lexicon [*sənəp*], [*suduʔan*] and [*loro wətəŋ*] used by the mountain community are found at observation points at number three and observation point four, these mountainous people are more likely to use according to what their stomach pain feels like, how is it different from coastal communities that they prefer to use the general variation of the lexicon [*loro wətəŋ*] can be seen at observation point one and observation point two.

### h. Horsewhip

The observation point is in Bondo Village, Bangsri District, the observation point is in Karanggondang Village, Mlonggo District, the observation point is in Tempur Village, Keling District and the observation point is in Plajan Village, Pakis Aji District, speakers say the word 'whip' has 3 lexicon, namely:

Table 8:

No	Jepara Mountains area	Jepara Coastal area
1	[pəcut]	[pəntun]
2	[sabət]	-

The variant of the lexicon on this 'whip' gloss has variations of the lexicon [sabət], [pəcut] and [pəntun], which has different usage in Jepara district in coastal communities and mountainous communities . The variations of the lexicon [sabət], [pəcut] and [pəntun] used by the mountain people are found at observation points at number three and observation point four, these mountainous communities are more likely to use according to what is done with the whip so they have a variety of lexicon, different from coastal communities that they prefer to use the general variation of the [pəntun] lexicon can be seen at observation point one and observation point two.

### i. Basket

The observation point is in Bondo Village, Bangsri District, the observation point is in Karanggondang Village, Mlonggo District, the observation point is in Tempur Village, Keling District and the observation point is in Plajan Village, Pakis Aji District, speakers say the word 'basket' has 3 lexicon, namely:

Table 9:

No	Jepara Mountains area	Jepara Coastal area
1	[tɔmbɔʔ]	kranjaŋ
2	[dunak]	-

There are three variations of the lexicon in Jepara district in this word basket, namely the variation of the lexicon [kranjaŋ], [tɔmbɔʔ], [dunak]. Mountain people prefer to use the [kranjaŋ] and [tɔmbɔʔ] lexicon variations because each basket according to this mountain community has different lexicon variations, this is shown at observation points number three and observation point four, while coastal communities are more

likely to use or more choosing to use the [kranjaŋ] lexicon variation that is general in nature can be seen at observation point one and observation point two.

#### j. Light switch

The observation point is in Bondo Village, Bangsri District, the observation point is in Karanggondang Village, Mlonggo District, the observation point is in Tempur Village, Keling District and the observation point is in Plajan Village, Pakis Aji District, speakers say the word 'switch' has 4 lexicon, namely:

Table 10:

No	Jepara Mountains area	Jepara Coastal area
1	[cəθetan]	[saklar]
2	[cəkəkəkən]	[səkakəl]

The lexicon variation in Jepara district on this switch word has four lexicon variations, namely the lexicon variation [saklar], [səkakəl], [cəθetan] and [cəkəkəkən] Mountain communities prefer to use variations of the [cəθetan] and [cəkəkəkən] lexicon which are indicated at observation points in number three and observation point four, while coastal communities are more likely to use or prefer to use variations of the lexicon [switch], [səkakəl], which are general in nature can be seen at observation point one and observation point two.

#### k. Dipper

The observation point is in Bondo Village, Bangsri District, the observation point is in Karanggondang Village, Mlonggo District, the observation point is in Tempur Village, Keling District and the observation point is in Plajan Village, Pakis Aji District, speakers say the word 'Gayung' has 4 lexicon, namely:

Table 11:

No	Jepara Mountains area	Jepara Coastal area
1	[bəruʔ]	[cidabuʔ]
2	[jəbur]	[sinur]

This lexicon variation on the word 'Gayung' has four lexicon variations, namely the lexicon variation [sinur], [cidabuʔ], [bəruʔ] and [jəbur] peoples prefer to use variations of the [bəruʔ] lexicon. and [jəbur] is indicated at the observation point in number three and observation point four, while these coastal communities are more likely to use or prefer to use variations of

the lexicon lexicon [sɪwʊr] and [cidbuʔ] which are general in nature can be seen at observation point one and observation point two.

### 1. Work at someone else's place

The observation point is in Bondo Village, Bangsri District, the observation point is in Karanggondang Village, Mlonggo District, the observation point is in Tempur Village, Keling District and the observation point is in Plajan Village, Pakis Aji District. The 4 lexicons are:

Table 12:

No	Jepara Mountains area	Jepara Coastal area
1	[rɛwan]	[mɔcɔʔ]
2	[ɲɛɲɛn]	[burɔh]

Speakers who use the words [rɛwan] and [ɲɛɲɛn] are usually used by mountain people, namely at the observation point number three and observation point four, those who use the words [rɛwan] and [ɲɛɲɛn] are from children to the elderly. Meanwhile, coastal communities in Jepara Regency are more likely to use [mɔcɔʔ] and [burɔh] at observation points one and observation points two, usually using the words [mɔcɔʔ] and [burɔh] older people to younger or the same age or age. .

There are differences in the lexicon based on mountain communities and coastal communities. These mountainous communities prefer the Javanese lexicon using [rɛwan] and [ɲɛɲɛn], while the coastal communities prefer to use the Javanese language lexicon using [mɔcɔʔ] and [burɔh].

### m. Percussion

The observation point is in Bondo Village, Bangsri District, the observation point is in Karanggondang Village, Mlonggo District, the observation point is in Tempur Village, Keling District and the observation point is in Plajan Village, Pakis Aji District, the speaker pronounces the word 'at' this has 4 lexicon, namely:

Table 13:

No	Jepara Mountains area	Jepara Coastal area
1	[kamplɛn]	[ɟɪɟs]
2	[gitIʔ]	[tabɔk]

The lexicon variation in this word has four lexicon variations, namely the lexicon variations [tabɔk], [kamplɛn], [gitIʔ] and [ɟɪɟs] Mountain communities prefer to use the variation of the lexicon [kamplɛn], [gitIʔ]

which is indicated at the observation point number three and observation point four, while the coastal community is more likely to use or prefer to use this variation of the lexicon [ʒrʒb] and [tabʒk]. can be seen at observation point one and observation point two.

**n. Lie**

The observation point is in Bondo Village, Bangsri District, the observation point is in Karanggondang Village, Mlonggo District, the observation point is in Tempur Village, Keling District and the observation point is in Plajan Village, Pakis Aji District, speakers say the word 'lie' has 4 lexicon, namely:

Table 14:

No	Jepara Mountains area	Jepara Coastal area
1	[gʒrʒb]	[apus]
2	[mblidu?i]	[gəðabus]

Variations in the lexicon of this lying word have three lexicon variations, namely the lexicon variations [gəðabus], [gʒrʒb], [mblidu?i] and [apus] Mountain peoples prefer to use variations of the lexicon [gʒrʒb] and [mblidu?i] lexicon variations are indicated at observation points in number three and observation point four, while coastal communities are more likely to use or prefer to use lexicon variations [gəðabus] and [apus] this lexicon variation can be seen at observation point one and observation point two.

**o. Arrogant**

The observation point is in Bondo Village, Bangsri District, the observation point is in Karanggondang Village, Mlonggo District, the observation point is in Tempur Village, Keling District and the observation point is in Plajan Village, Pakis Aji District, speakers say the word 'Sombong' has 4 lexicon, namely:

Table 15:

No	Jepara Mountains area	Jepara Coastal area
1	[anga?]	[kəmakei]
2	[ketakete]	[kəmanthus]

The lexicon variation in Jepara district on this word arrogant has four lexicon variations, namely lexicon variations [kəmakei], [kəmanthus], [anga?] and [ketakete]. Mountain communities prefer to use variations of the lexicon which [anga?] and [ketakete] variations of this lexicon are shown at observation points at number three and observation point four, while coastal communities are more likely to use or prefer to use lexicon

variations [*kəmakɪ*] and [*kəməntʰus*], this lexicon variation can be seen at observation point one and observation point two.

## 2. Accent

This linguistic phonology in this language is the most basic or the smallest. Phonology is linguistics, one of which is that to study the sounds or sounds of language which is the smallest or smallest unit of speech which comes from the sounds which make up a syllable or syllable, a tone, a pause and a duration in speaking (Abdul Chaer, 2009).

Table 16:

No	Jepara Mountains area	Jepara Coastal area
1	<i>Slendang</i> = plain cloth / batik motif Length	<i>Lendang</i> = plain cloth / batik motif Length
2	<i>Wineb</i> = seeds of plant seeds	<i>Weneb</i> = seeds of plant seeds

Based on the existing data, there are differences from the phonetics or phonology, namely in data number one *Lendang* and *Slendang*, while in data no two there are differences in *Weneb* and *Wineb*. This is a phonetic difference.

## CONCLUSION

The above discussion of Variations in the Use of Coastal and Mountain Javanese Language in Jepara Regency: Socio Dialectological studies, researchers can conclude that this variation of coastal and mountainous Javanese language in Jepara has 15 variations of the lexicon consisting of basic vocabulary having 5 glosses, these diseases and disorders have 2 glosses, This livestock and animal has 1 gloss, this item and equipment has 3 gloss, this culture has 1 gloss, this verb has 2 gloss, and this adjective has 1 gloss.(phonology) in and areas ountainous coastal sound areas researchers study, found differences In coastal and mountainous areas in Jepara, *Weneb* is used in coastal areas while the word *Wineb* is used more in mountainous areas from the words phonetic differences Thesis *Lendang* and *Slendang*, *Weneb* and *Wineb*. in mountainous and coastal areas in Jepara Regency.

## REFERENCES

- Abdul Chaer. (2009). *Fonologi*. Rineka Cipta.
- Abdul Chaer. (2014). *Sosiolinguistik*. Rineka Cipta.
- Andini, H. (2017). Makna Kultural dalam Leksikon Perlengkapan Seni Begalan Masyarakat Desa Selakambang Kecamatan Kaligondang Kabupaten Purbalingga. *Jurnal Sastra Indonesia Universitas Negeri Semarang*.
- Antono, A., Zulaeha, I., & Bachaqie, I. (2019). Pemertahanan Fonologis dan Leksikal Bahasa Jawa di Kabupaten Wonogiri: Kajian Geografi Dialek. *Jurnal Sastra Indonesia*, 8(1), 23–32.
- Antono, A. (2019). Pemertahanan Fonologis dan Leksikal Bahasa Jawa di Kabupaten Wonogiri: Kajian Geografi Dialek. *Jurnal Sastra Indonesia Universitas Negeri Semarang*.
- Budiwiyanto, A. (2003). *Kontribusi Kosakata Bahasa Indonesia*. Badan Bahasa: Kemendikbud.
- Erfina Cahyanti. (2016). *Pemakaian Bahasa Jawa di Kabupaten Purworejo (Kajian Sosiodialektologi)*. Pascasarjana UGM.
- Farikha, N. (2022). Perbandingan Dialek Bahasa Jawa Masyarakat Pesisir Dengan Masyarakat Pegunungan Di Pasuruan: Kajian Dialektologi. *Jurnal Penelitian, Pendidikan, dan Pembelajaran*, 17(16).
- Hastuti, P. A. (2018). Pemakaian Fonologi dan Leksikon Bahasa Jawa: Studi Sosiodialektologi di Kabupaten Batang. *Jurnal Sastra Indonesia Universitas Negeri Semarang*.
- Indrariansi, E. A., & Ningrum, Y. F. (2017). Kajian Kontrastif : Dialek Bahasa Jawa Pesisir dan Pegunungan di Kabupaten Pemalang. *Jurnal Bahasa Lingua Scientia*, 9(2), 347–356.
- Jayaraj, T. & R. K. (2020). Variation Of Lexical Items and The Changing Need Of Identity Projection : A Study On Mappila Malayalam. *Dialectologia*, 24, 157–176.
- Junaidi, Yani, J., & R. (2016). Variasi Inovasi Leksikal Bahasa Melayu Riau di Kecamatan Pulau Merbau. *Jurnal Pustaka Budaya*, 3(1).
- Kartikasari, Erlin & K. L. (2022). Lexical and Phonological Differences in Javanese. *Dialectologia*, 28(8), 143–155.
- Kawasari, M. N. (2017). Variasi Penggunaan Bahasa Jawa Pada Masyarakat Petani Di Pedesaan (Kajian Sosiodialektologi Di Desa Banaran Kulon, Kecamatan Bagor, Kabupaten Nganjuk). *eprints undip*.
- Keraf, G. (1996). *Tata Bahasa Indonesia*. Ikrar Mandiri Abadi.
- Kurniawan, P. T. (2013). Analisis fonologi dan leksikologi Bahasa Jawa di

- Desa Pakem Kecamatan Gebang Kabupaten Purworejo. *Jurnal Program Studi Pendidikan Bahasa Sastra Jawa*, 2(4).
- Mahsun. (1995). *Dialektologi Diakronis Sebuah Pengantar*. Gadjah Mada University Press.
- Muslich, M. (2017). *Fonologi Bahasa Indonesia*. PT Bumi Aksara.
- N, Leo Nella Rizki, N. & N. (2021). Lexical Variations Of Javanese Used By The Transmigrants In Dharmasraya Regency. *Dialectologia*, 27, 175–187. <https://doi.org/10.1344/Dialectologia2021.27.7>
- Nadra dan Reniwati. (2009). *Dialektologi: Teori dan Metode*. Elmaterra Publishing.
- Ocktarani, Y. M. (2011). Analisis Dialek Regional Bahasa Inggris: Variasi Bunyi Pengucapan Kata oleh Sembilan Penutur Asli. *Lensa*, 1(1).
- Parera, J. D. (1991). *Kajian Linguistik Umum Historis Komparatif dan Tipologi Struktural*. Erlangga.
- Purwanti, A. T. (2015). *Pemetaan Bahasa Padhalungan Pada Masyarakat Kabupaten Probolinggo: Kajian Dialektologi*. Universitas Airlangga.
- Putu Devi Maharani. (2017). Variasi Bahasa Bali Dialek Kuta Selatan (Kajian Sosiodialektologi). *journal unmas, volume 9*.
- Rahayu, I. M. (2012). *Dialek Bahasa Jawa di Wilayah Kabupaten Ngawi: Kajian Dialektologi*. Universitas Airlangga.
- Rosyadi, D. (2017). Perbandingan Leksikon Bahasa Jawa dengan Bahasa Sunda di Kecamatan Larangan Kabupaten Brebes. *Jurnal Sastra Indonesia Universitas Negeri Semarang*.
- Sari, M. D. (2018). Nilai Filosofis dalam Leksikon Batik Demak di Kabupaten Demak (Kajian Etnolinguistik). *Jurnal Sastra Indonesia Universitas Negeri Semarang*.
- Sariono, A. (2016). *Pengantar Dialektologi: Panduan Penelitian dengan Metode Dialektometri*. CAPS.
- Sasongko, H. A. (2015). *Variasi Leksikal Bahasa Jawa Ngoko Masyarakat Desa Ngadirejo Kecamatan Reban Kabupaten Batang*. Universitas Negeri Semarang.
- Sudaryanto. (2015). *Metode dan Aneka Teknik Analisis Bahasa*. Sanata Dharma University Press.
- Susanto, H. (2016). *Sosiodialektolog*. Wong Kapetakan's Blog. <https://bagawanabiyasa.wordpress.com/2016/08/15/variasi-bahasa/>
- Widayani, R. (2015). *Variasi Dialek Bahasa Jawa di Wilayah Kabupaten Lamongan: Kajian Dialek Geografis*. Universitas Airlangga.



- Wijayanti, E. D. (2016). Variasi Dialek Bahasa Bawean di Wilayah Pulau Bawean Kabupaten Gresik: Kajian Dialektologi. *Universitas Airlangga Surabaya*.
- Wiladati, R. A. (2014). *Bahasa Jawa di Kabupate Batang: Tataran Fonologi dan Leksikon*. Universitas Negeri Semarang.
- Zulaeha, I. (2010). *Dialektologi*. Graha Ilmu.