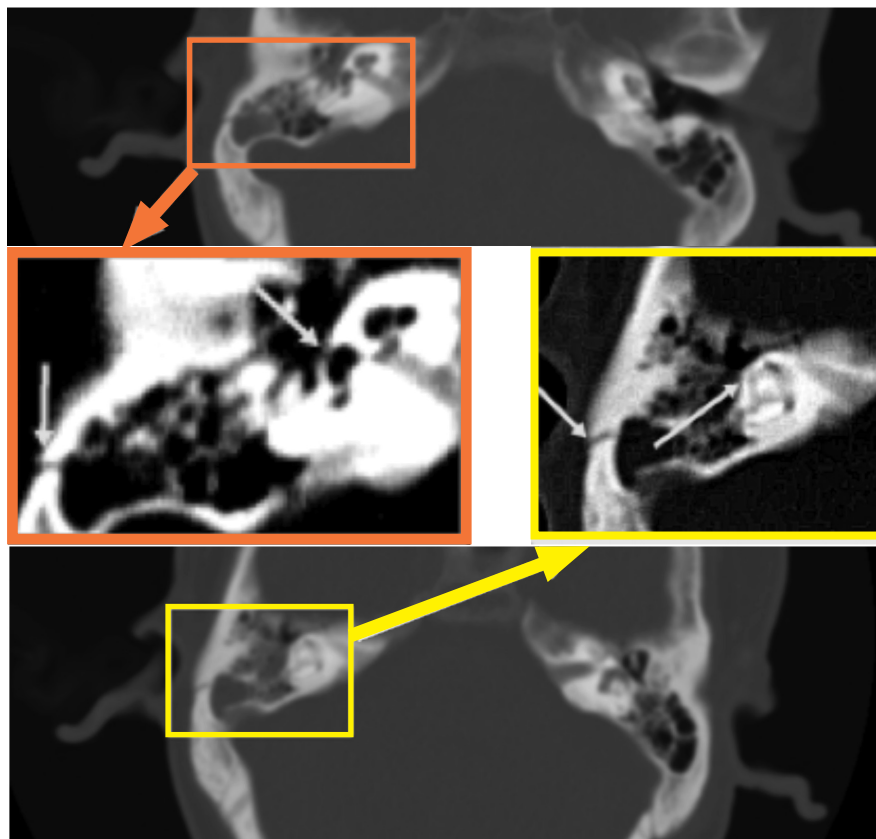


Response from the Authors

Dear Sir:

Thank you for that pointing it out. All the CT images were read and reread by an experienced radiologist whose skill is beyond reproach and experience unquestionable. The results of the study therefore are verifiable and it, too, will stand scrutiny. There were no mistakes or mislabelling of the CT scan images of each patient. The reported result of only 3 otic-involved fractures out of 41 patients included in the study stands and is spot on.

Upon review of the images in the article, it was determined that the image used in *Fig. 1* was erroneously inserted and used in the space for *Fig. 4*.



Heretofore are 2 CT images of the patients with otic-involved temporal bone fractures: (Thin arrows point to the evident fracture lines)

Truly yours,

Rene C. Lacanilao, MD
 Ruben J. Chua, Jr., MD
 Department of Otolaryngology – Head and Neck Surgery
 Amang Rodriguez Memorial Medical Center
 Sumulong Highway, Sto. Niño, Marikina City 1800
 Philippines

Editorial note: This letter is published as it was received. An editorial offer to revise the response was declined: “yes it was deliberately worded that way because the letter to the editor was too heavy handed.” The authors were reminded that as they approved the final galley proofs before publication, “the image used in *Fig. 1* was” NOT “erroneously inserted and used in the space for *Fig. 4*” by the journal and an editorial note would have to be made to that effect. They replied: “Yes. The erroneous insertion was on our part. It managed to escape scrutiny. Please include your note.”